

## Inequality, Leverage, and Crises<sup>†</sup>

By MICHAEL KUMHOF, ROMAIN RANCIÈRE, AND PABLO WINANT\*

*The paper studies how high household leverage and crises can be caused by changes in the income distribution. Empirically, the periods 1920–1929 and 1983–2008 both exhibited a large increase in the income share of high-income households, a large increase in debt leverage of low- and middle-income households, and an eventual financial and real crisis. The paper presents a theoretical model where higher leverage and crises are the endogenous result of a growing income share of high-income households. The model matches the profiles of the income distribution, the debt-to-income ratio and crisis risk for the three decades preceding the Great Recession. (JEL D14, D31, D33, E32, E44, G01, N22)*

The United States experienced two major economic crises over the past century—the Great Depression starting in 1929 and the Great Recession starting in 2008. A striking and often overlooked similarity between these two crises is that both were preceded, over a period of decades, by a sharp increase in income inequality, and by a similarly sharp increase in debt-to-income ratios among lower- and middle-income households. When debt levels started to be perceived as unsustainable, they contributed to triggering exceptionally deep financial and real crises.

In this paper, we first document these facts, both for the period prior to the Great Depression and the period prior to the Great Recession, and we then present a dynamic stochastic general equilibrium model in which a crisis driven by greater income inequality arises endogenously. To our knowledge, our model is the first to provide an internally consistent mechanism linking the empirically observed rise in income inequality, the increase in debt-to-income ratios, and the risk of a financial

\*Kumhof: c/o Research Hub, Bank of England, Threadneedle Street, London EC2R 8AH, UK (e-mail: michael.kumhof@bankofengland.co.uk); Rancière: International Monetary Fund, Research Department, 700 19th Street NW, Washington, DC 20431, and Paris School of Economics (email: ranciere@imf.org); Winant: Paris School of Economics, 106-112 Boulevard de l'Hôpital, 75013 Paris, France (email: pablo.winant@gmail.com). The views expressed in this paper are those of the authors and do not necessarily represent the views or policy of the IMF or of the Bank of England. Claire Lebarz provided outstanding research assistance. We thank Emmanuel Saez and Gabriel Zucman for sharing data with us. Helpful suggestions from seminar participants at Boston University, Brookings, Center for American Progress, Columbia SIPA, Dalhousie University, Ditchley Foundation, European University Institute, Federal Reserve Board, Fordham University, Friedrich Ebert Stiftung, Geneva Graduate Institute, Georgetown University, Indiana University, Humboldt University, INET, IADB, ILO, IMF, George Washington University, Johns Hopkins University, Lausanne University, London Business School, University of Michigan, New York Fed, Notre Dame University, Paris School of Economics, Universitat Pompeu Fabra, University of Pennsylvania, University of Southern California, San Francisco Fed, Sciences Po, Tobin Project, UC Berkeley, UC Davis, UCLA, and Vienna IHS are gratefully acknowledged. Romain Rancière acknowledges financial support from Chaire Banque de France at PSE.

<sup>†</sup>Go to <http://dx.doi.org/10.1257/aer.20110683> to visit the article page for additional materials and author disclosure statement(s).

crisis. In doing so it provides a useful theoretical framework, including a new methodology for its calibration, that can be used to investigate the role of income inequality as an independent source of macroeconomic fluctuations.

The model is kept as simple as possible in order to allow for a clear understanding of the mechanisms at work. The crisis is the ultimate result, after a period of decades, of permanent shocks to the income shares of two groups of households: top earners who represent the top 5 percent of the income distribution, and whose income share increases; and bottom earners who represent the bottom 95 percent of the income distribution.<sup>1</sup> The key mechanism is that top earners, rather than using all of their increased income for higher consumption, use a large share of it to accumulate financial wealth in the form of loans to bottom earners.<sup>2</sup> They do so because, following Carroll (2000) and others, financial wealth enters their utility function directly, which implies a positive marginal propensity to save out of permanent income shocks. By accumulating financial wealth, top earners allow bottom earners to limit the drop in their consumption, but the resulting large increase of bottom earners' debt-to-income ratio generates financial fragility that eventually makes a financial crisis much more likely.

The crisis is the result of an endogenous and rational default decision on the part of bottom earners, who trade off the benefits of relief from their growing debt load against output and utility costs associated with default. Lenders fully expect this behavior and price loans accordingly. The crisis is characterized by partial household debt defaults and an abrupt output contraction, a mechanism that is consistent with the results of Philippon and Midrigan (2011) and Gärtner (2013) for the Great Recession and the Great Depression, respectively. When a rational default occurs, it does provide relief to bottom earners. But because it is accompanied by a collapse in real activity that hits bottom earners especially hard, and because of higher post-crisis interest rates, the effect on their debt-to-income ratios is small, and debt quickly starts to increase again if income inequality remains unchanged.

When the shock to income inequality is permanent, consistent with the time series properties of US top 5 percent income shares, the preferences for wealth of top earners (and thus their positive marginal propensity to save following a permanent income shock) are key to our results on debt growth. We show in a baseline simulation that, when preferences for wealth of top earners are calibrated to match a marginal propensity to save of around 0.4, an empirical estimate that is based on independent microeconomic data, a series of permanent negative shocks to the income share of bottom earners, of exactly the magnitude observed in the data, generates an increase in the debt-to-income ratio of bottom earners very close to the magnitude observed in the 1983–2007 data. Because the evolution of the debt-to-income ratio of bottom earners is not a target of our calibration, this constitutes an empirical success of our model. Furthermore, the increase in debt leads to a significant increase in crisis risk, of approximately the magnitude found in the recent work of Schularick and Taylor (2012). In Section IF we discuss other explanations for the 1983–2007 increase in debt levels and crisis risk that focus on domestic and global

<sup>1</sup>Note that our paper focuses only on the macroeconomic implications of increased income inequality, rather than taking a stand on the fundamental reasons for changes in the income distribution.

<sup>2</sup>In a more elaborate model, physical investment is a third option. See Kumhof and Rancière (2010).

asset market imbalances in the decade prior to the Great Depression. We also show, in an alternative simulation, that when the shock to income inequality is modeled as transitory, the same model parameterized without preferences for wealth among top earners can generate an increase in debt and crisis risk purely based on a consumption smoothing motive.

The central argument of the paper links two strands of the literature<sup>3</sup> that have largely been evolving separately: the literature on income and wealth distribution,<sup>4</sup> and the literature on financial fragility and financial crises.<sup>5</sup> In addition, our modeling approach takes elements from the literature on preferences for wealth,<sup>6</sup> to explain the rise of household debt leverage when the increase in income inequality is permanent, and from the literature on rational default, to endogenize financial crises.<sup>7</sup>

Rajan (2010) and Reich (2010) share with this paper an emphasis on income inequality as a long-run determinant of leverage and financial fragility. In contrast to these authors, we study this issue in the context of a general equilibrium model. This permits a quantification of the importance of this channel, and an identification of the respective roles of credit demand and credit supply in the rise of household leverage and crisis risk.<sup>8</sup> Another literature has related increases in income inequality to increases in household debt (Krueger and Perri 2006, Iacoviello 2008). In these authors' approach, an increase in the variance of idiosyncratic income shocks across all households generates a higher demand for insurance through credit markets, thereby increasing household debt. This approach emphasizes an increase in income inequality experienced within household groups with similar characteristics, while our paper focuses on the empirically well-documented rise in income inequality between two specific household groups, the top 5 percent and the bottom 95 percent of the income distribution.

In theory, if increasing income inequality was accompanied by an increase in intragenerational income mobility, the dispersion in lifetime earnings might be much smaller than the dispersion in annual earnings, as agents move up and down the income ladder throughout their lives. However, a recent study by Kopczuk, Saez, and Song (2010) shows that short-term and long-term income mobility in the United States has been either stable or slightly falling since the 1950s. These authors also find that virtually all of the increase in the variance of earnings over recent decades has been due to an increase in the variance of permanent earnings rather than of transitory earnings.<sup>9</sup> These results provide support for one of our simplifying modeling choices, the assumption of two income groups with fixed memberships. They also provide additional support for our calibration, whereby shocks to the income distribution are permanent.

<sup>3</sup>In the interest of space, we only provide here an abridged version of the literature review. The long version is presented in the online Appendix.

<sup>4</sup>See Piketty and Saez (2003) and Piketty and Zucman (2014).

<sup>5</sup>See Levitin and Wachter (2012) and the references therein.

<sup>6</sup>See Carroll (2000), Reiter (2004), Francis (2009), and the references therein. As discussed in the online Appendix, preferences for wealth have been used by this literature because models with standard preferences have difficulties accounting for the saving behavior of the richest households.

<sup>7</sup>See Arellano (2008) and Pouzo and Presno (2012) and the references therein.

<sup>8</sup>Using local measures of inequality and credit, Coibion et al. (2014) find empirical evidence consistent with supply-side interpretations of debt accumulation patterns during the 2000s.

<sup>9</sup>Similar results are found by DeBacker et al. (2013).

There is little guidance from the literature on how to calibrate the preference for wealth specification. But there is a small literature on the marginal propensity to save (MPS) of different income groups. The key paper is Dynan, Skinner, and Zeldes (2004), who find that MPS are steeply increasing in the level of permanent income, and reach values of 0.5 or even higher for the highest income groups. We show that these results can be mapped directly into a calibration of the preference for wealth parameters. This calibration methodology is another contribution of our paper.

The rest of the paper is organized as followed. Section I discusses key stylized facts for the Great Depression and the Great Recession. Section II presents the model. Section III discusses model calibration and the computational solution method. Section IV shows model simulations that study the effects of increasing income inequality on debt levels and crises. Section V concludes.

## I. Stylized Facts

This section documents five key stylized facts that characterize, for the US economy, the periods prior to the Great Recession and, where available, the Great Depression. These facts are relevant to the nexus between inequality, leverage, and crises. Some will inform the specification and calibration of our model, and others will be used to evaluate the empirical support for the model. We conclude this section with a discussion of the empirical evidence associated with the two main alternative explanations for high and growing household debt that have been advanced in the literature.

### A. Income Inequality and Aggregate Household Debt

In the periods prior to both major crises, rapidly growing income inequality was accompanied by a sharp increase in aggregate household debt.

*Pre-Great-Recession.*—Panel A of Figure 1 plots the evolution of US income inequality and household debt-to-GDP ratios between 1983 and 2008. Income inequality experienced a sharp increase, as the share of total income commanded by the top 5 percent of the income distribution increased from 21.8 percent in 1983 to 33.8 percent in 2007. During the same period the ratio of household debt to gross domestic product (GDP) doubled, from 49.1 percent to 98.0 percent.

*Pre-Great-Depression.*—Panel B of Figure 1 plots the evolution of US income inequality and household debt-to-GDP ratios between 1920 and 1929. Between 1920 and 1928, the top 5 percent income share increased from 27.5 percent to 34.8 percent. During the same period, the ratio of household debt to GDP more than doubled, from 16.9 percent to 37.1 percent.

### B. Debt by Income Group

The periods prior to both major crises were characterized by increasing heterogeneity in debt-to-income ratios between high-income households and all remaining

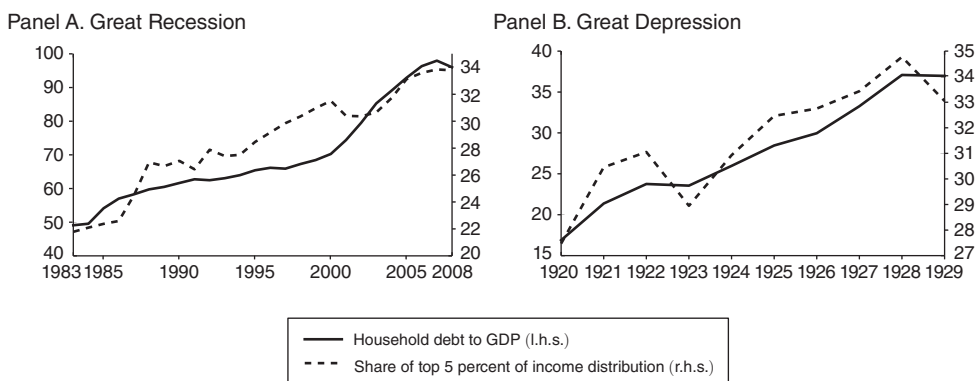


FIGURE 1. INCOME INEQUALITY AND HOUSEHOLD LEVERAGE

*Sources:* Panel A: Income shares from Piketty and Saez (2003, updated). Income excludes capital gains. Household debt-to-GDP ratios from Philippon (2013), based on Flows of Funds database and Bureau of Economic Analysis (BEA). Income shares from Piketty and Saez (2003, updated). Panel B: Income excludes capital gains. Household debt-to-GDP ratios from Philippon (2013), based on Historical Statistics of the United States (Millennial Edition) and Surveys of Current Business.

households. For the period prior to the Great Depression data availability is very limited, but some evidence exists, and is consistent with the period prior to the Great Recession.

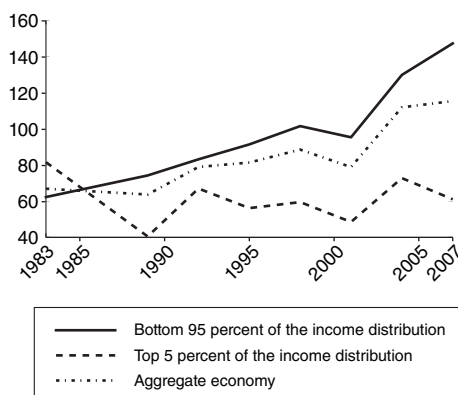
*Pre-Great-Recession.*—Panel A of Figure 2 plots the evolution of debt-to-income ratios for the top 5 percent and bottom 95 percent of households, ranked by income, between 1983 and 2007.<sup>10</sup> In 1983, the top income group was more indebted than the bottom income group, with a gap of around 20 percentage points. In 2007, the situation was reversed. The debt-to-income ratio of the bottom group, at 147.3 percent compared to an initial value of 62.3 percent, was now more than twice as high as that of the top group, which remained fluctuating around 60 percent. As a consequence almost all of the increase in the aggregate debt-to-income ratio shown in Figure 1 is due to the bottom group of the income distribution. A similar pattern to the debt-to-income ratios in Figure 2 is also observed in debt-to-net-worth ratios (panel A of Figure 3), and in unsecured debt-to-income ratios (panel B of Figure 3).<sup>11</sup>

*Pre-Great-Depression.*—According to Olney (1991) and Olney (1999), the ratio of non-mortgage consumer debt to income increased from 4.6 percent in 1919 to 9.3 percent in 1929. Around two-thirds of this was installment debt, especially for

<sup>10</sup> Debt-to-income ratios are constructed using data from the Survey of Consumer Finances (SCF), which starts in 1983, and became triennial starting in 1989, making 2007 the last pre-crisis observation.

<sup>11</sup> It is sometimes argued that the more recent increases in household debt (2000–2007), which consisted to a large extent of mortgage loans, represented borrowing against houses whose fundamental value had risen. However several recent empirical papers (Mian and Sufi 2009; Favara and Imbs 2010; Adelino, Schoar, and Severino 2012) show that causation ran from credit to house prices, specifically that credit supply shocks caused house prices to increase above fundamental values.

Panel A. Great Recession:  
debt-to-income ratios



Panel B. Great Depression:  
new loans relative to income

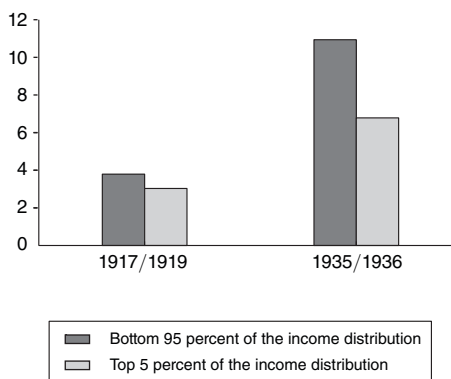
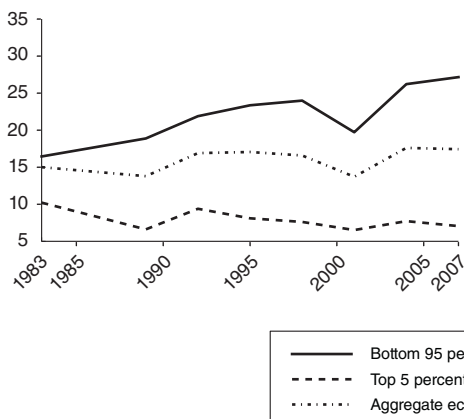


FIGURE 2. DEBT-TO-INCOME RATIOS BY INCOME GROUP

Sources: Panel A: Survey of Consumer Finance (triennial), 1983–2007. Debt corresponds to the stock of all outstanding household debt liabilities. Income corresponds to annual income before taxes, in the year preceding the survey. Panel B: Bureau of Labor Statistics, 1917/1919 Consumer Purchase Survey (CPS), and 1935/1936 Study of Consumer Purchases in the United States. The 1917/1919 survey covers 13,000 non-farm families. The 1935/1936 survey covers 60,000 farm and non-farm non relief families.

Panel A. Debt-to-net-worth ratios



Panel B. Unsecured debt-to-income ratios

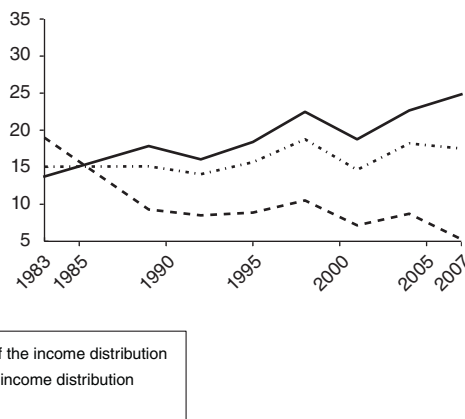


FIGURE 3. ALTERNATIVE DEBT RATIOS

Sources: Panel A: Survey of Consumer Finance (triennial), 1983–2007. Debt corresponds to the stock of all outstanding household debt liabilities. Net worth corresponds to the difference between the total value of household assets and the stock of all outstanding household debt liabilities. Panel B: Survey of Consumer Finance (triennial), 1983–2007. Unsecured debt corresponds to the difference between the stock of all outstanding household debt liabilities and the amount of outstanding household debt liabilities secured by residential properties. Income corresponds to annual income before taxes, in the year preceding the survey.

the purchase of cars. Between 1919 and 1929, the percentage of households buying new cars increased from 8.6 percent to 24.0 percent.

For this period, only two BLS surveys, from 1917/1919 and 1935/1936, are available to study differences in borrowing across income groups. The 1935/1936 survey was taken several years after the crisis of 1929. But the data are nevertheless



informative, for two reasons. First, the top 5 percent income share in 1936 was still high (32.5 percent), implying that income inequality had only very partially been reversed since 1929. And second, by 1936 the number of new cars sold and the percentage of households buying cars on installment, after having collapsed between 1929 and 1934, had recovered to reach very comparable levels to 1927 (Olney 1991).

We use the income thresholds provided by Piketty and Saez (2003) to classify the respondents of both surveys into either the top 5 percent or the bottom 95 percent of the income distribution. To make the results of the two surveys comparable, we confine the analysis to installment credit. The surveys do not report stocks of debt but rather flows of new debt associated with installment purchases in the last 12 months. Panel B of Figure 2 presents the results. In the 1917/1918 survey, the new installment debt to income ratios are both low and similar for both groups, at 3.0 percent and 3.8 percent for the top and bottom income groups. In the 1935/1936 survey, the ratios are much higher and, more importantly, much more dissimilar across income groups, at 6.8 percent and 10.9 percent for the top and bottom income groups. In 1935/1936, the ratio of average incomes between borrowers in the top and bottom groups was 3.25, while the ratio of average amounts borrowed was only 1.6. To the extent that these data are representative of other years during this period, it indicates a significantly higher growth in debt-to-income ratios among the bottom income group.<sup>12</sup>

### C. Wealth by Income Group

In the periods prior to both major crises, the rise in income inequality was associated not only with divergent debt levels across income groups, but also with divergent shares of overall wealth.

*Pre-Great-Recession.*—Panel A of Figure 4, which is based on SCF data, plots the share of wealth held by the top 5 percent of the income distribution between 1983 and 2007. Except for a brief period between 1989 and 1992, this wealth share increased continuously, from 42.6 percent in 1983 to 48.6 percent in 2007.

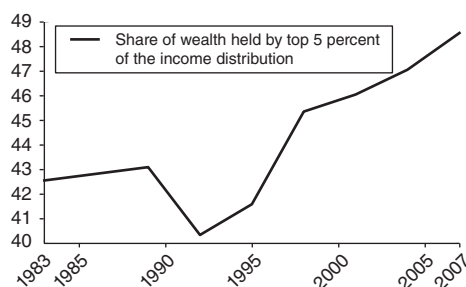
*Pre-Great-Depression.*—Panel B of Figure 4, which is based on the dataset of Saez and Zucman (2014), plots the share of wealth held by the top 1 percent of the wealth distribution between 1920 and 1928. Except for 1923, this wealth share increased continuously, from 34.9 percent in 1920 to 47.5 percent in 1928.

### D. Leverage and Crisis Probability

To quantify the link between household leverage and crisis probabilities, we use the dataset of Schularick and Taylor (2012), which contains information on aggregate credit and crises for 14 countries between 1870 and 2008. We follow these authors' methodology by running, on the full dataset, a logit specification in which

<sup>12</sup> Alternative sources for the period immediately prior to 1929 exist and are broadly consistent with the 1935/1936 survey, but they are much more limited in quality or scope. See Plummer (1927) and Bureau of Labor Statistics (1929).

Panel A. Great Recession



Panel B. Great Depression

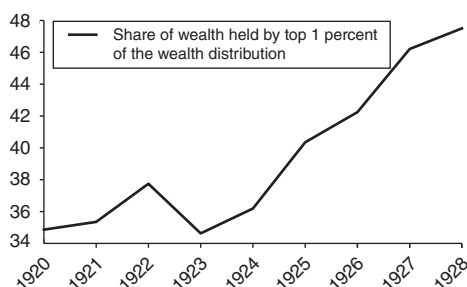


FIGURE 4. WEALTH INEQUALITY

Sources: Panel A: Survey of Consumer Finance (triennial), 1983–2007. Wealth is measured by net worth, which equals the difference between the total value of household assets and the stock of all outstanding household debt liabilities. Panel B: Saez and Zucman (2014).

the binary variable is a crisis dummy, and the latent explanatory variables include five lags of the aggregate loans-to-GDP ratio. The estimated logit model is used to predict crisis probabilities over the full cross section and time series sample. Figure 5 reports the estimated probabilities for the United States. We observe that, in the periods prior to both major crises, there was a sizable increase in crisis probabilities, even though a crisis remained a low probability event.

*Pre-Great-Recession.*—Panel A of Figure 5 shows that the estimated crisis probability started at 2.0 percent in 1983 and increased to 5.2 percent by 2008. Between 2001 and 2008, the crisis probability increased by two percentage points.

*Pre-Great-Depression.*—Panel B of Figure 5 shows that the estimated crisis probability almost doubled between 1925 and 1928, from 1.6 percent to 3.0 percent, before reaching 4.0 percent in the year of the crisis.

### E. Household Defaults during Crises

Both major crises were characterized by high rates of default on household loans. Their magnitudes matter because the share of loans defaulted on in a crisis is an important parameter of our model.

*Great Recession.*—We compute delinquency rates as ratios of the balance of delinquent loans (defined as being past due by 90 days or more) to the total loan balance.<sup>13</sup> Between 2006 and 2010, mortgage delinquency rates increased dramatically, from 0.9 percent to 8.9 percent, and so did unsecured consumer loan delinquency rates, from 8.8 percent to 13.7 percent for credit card loans, from 2.3 percent to 5.3 percent for auto loans, and from 6.4 percent to 9.1 percent for student loans (the delinquency rate for student loans reached 11.7 percent in 2013). The figures

<sup>13</sup> Source: Federal Reserve Bank of New York, Household Debt and Credit Reports.



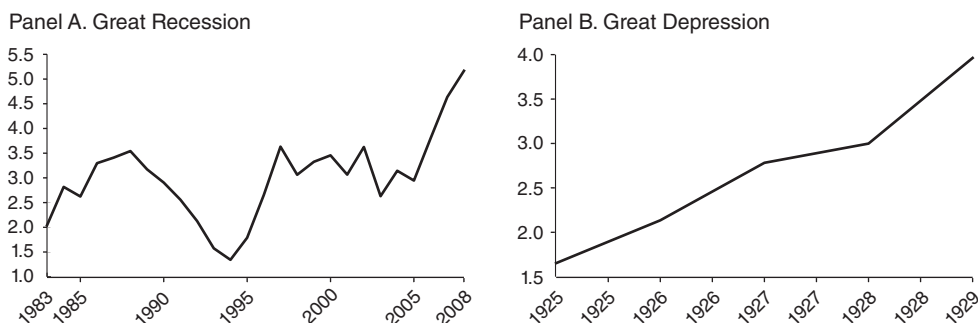


FIGURE 5. CRISIS PROBABILITIES

Sources: Panel A: Authors' calculation based on Schularick and Taylor (2012). Panel B: Authors' calculation based on Schularick and Taylor (2012).

mentioned above apply to all households. Default rates among bottom earners can be shown to have been higher.

*Great Depression.*—The crisis of 1929 was followed by a wave of defaults on automobile installment debt contracts (Olney 1999). The percentage of cars repossessed increased from 4.1 percent in 1928 to 10.4 percent in 1932. Furthermore, repossession rates were significantly higher for used cars than for new cars (13.2 percent versus 5.7 percent in 1932). Combined with the fact that wealthy households were much more likely to buy new cars than middle- and lower-class households (Calder 1999), this suggests that default rates on installment debt were higher among the bottom income group. Mortgage default rates were also high during the Great Depression. According to a study of 22 cities by the Department of Commerce, by January 1934, 43.8 percent of homes with a first mortgage were in default (Wheelock 2008).

#### F. Alternative Explanations for the Increase in Household Debt

The literature has advanced a number of alternative explanations for the rapid increase in household debt prior to the Great Recession. In this subsection we briefly look at the empirical evidence for the two most important alternative explanations, financial innovation and the global saving glut.

*Financial Sector Growth and Financial Innovation.*—The stylized facts pertaining to the evolution of the US financial industry over the last 125 years have recently been documented by Philippon (2013). For the purpose of our paper, the key facts are: (i) The finance industry's share of GDP increased by roughly 50 percent in the two periods of interest, from 2.8 percent to 4.6 percent between 1920 and 1928, and from 5.5 percent to 7.9 percent between 1983 and 2007. (ii) Most of these variations can be explained by corresponding changes in the quantity of intermediated assets. (iii) Intermediation is produced under constant returns to scale with an annual average cost of around 2 percent of outstanding assets. (iv) The unit cost of intermediation has not decreased over the past 30 years. This implies that the substantial increase in the GDP share of the financial sector can be explained by the simple

growth of balance sheets, without a necessary role for financial innovation.<sup>14</sup> In our model, that growth of balance sheets is due to an increase in household credit to bottom earners, following an increased supply of savings by top earners after they experience a permanent increase in income. According to Philippon (2013), household credit represented only around one-quarter of the stock of outstanding intermediated assets between 1983 and 2007. Financial activities that relate to non-household credit remain outside our model. Nevertheless, the rough doubling of household credit over the 1983–2007 period contributed substantially to the overall increase in the GDP share of the financial sector.

The facts stated above do not however rule out that financial innovation could have been an additional source of financial fragility. According to Levitin and Wachter (2012), several financial product innovations that spread during the last phase of the mortgage credit boom (2004–2007) led to significant underpricing of credit risk due to the complexity and opacity of these products.<sup>15</sup> Interestingly, the seemingly safe senior tranches of these securities attracted many foreign investors, contributing to the global saving glut to which we turn next.

*Global Saving Glut.*—The global saving glut, which links the large current account surpluses of Asian countries and the large current account deficit of the United States, emerged in 1998, in the aftermath of the Asian crisis. An empirical challenge is that we cannot directly, from the data, measure the contribution of foreign inflows to the build-up of household credit. We can however approximate this contribution, by considering the broad category of private credit market instruments in the US Flow of Funds, and by drawing on the model-based estimation results of Justiniano, Primiceri, and Tambalotti (2014).

In Flow of Funds data, the ratio of private domestic credit to GDP increased from 130.4 percent to 292.3 percent between 1983 and 2007. Meanwhile the ratio of foreign private credit assets to GDP increased from 2.8 percent to 34 percent. The contribution of foreign asset accumulation to private domestic debt accumulation differs widely between the pre-saving glut period (1983–1998) and the saving glut period (1998–2007). In the earlier period, private credit grew by 71 percentage points, with foreign asset accumulation only accounting for around 5 percent of this. In the later period, private credit grew by 90.6 percentage points, with foreign asset accumulation accounting for around 25 percent. Justiniano, Primiceri, and Tambalotti (2014) perform a quantitative model-based exercise that assesses the role of foreign capital flows in explaining the accumulation of US household credit over the period 1998–2006. They find that between one-quarter and one-third of the increase in US household debt can be explained by the dynamics of capital flows. In Section IVD we will show that these findings are consistent with the empirical performance of our model over the period 1998–2007.

<sup>14</sup> As stated by Philippon (2013, p. 7): “Since the unit cost appears to be roughly constant, the question becomes: how do we explain the large historical variations in the ratio of intermediated assets over GDP?”

<sup>15</sup> This aspect cannot be captured in our model, in which investors correctly price default risk.

## II. The Model

The model economy consists of two groups of infinitely lived households, referred to respectively as top earners, with population share  $\chi$ , and bottom earners, with population share  $1 - \chi$ . Total aggregate output  $y_t$  is given by an autoregressive stochastic process

$$(1) \quad y_t = (1 - \rho_y) \bar{y} + \rho_y y_{t-1} + \epsilon_{y,t},$$

where a bar above a variable denotes its steady-state value. The share of output received by top earners  $z_t$  is also an autoregressive stochastic process, and is given by

$$(2) \quad z_t = (1 - \rho_z) \bar{z} + \rho_z z_{t-1} + \epsilon_{z,t}.$$

The standard deviations of  $\epsilon_{y,t}$  and  $\epsilon_{z,t}$  are denoted by  $\sigma_y$  and  $\sigma_z$ .

### A. Top Earners

Top earners maximize the intertemporal utility function

$$(3) \quad U_t = E_t \sum_{k=0}^{\infty} \beta_{\tau}^k \left\{ \frac{(c_{t+k}^{\tau})^{1-\frac{1}{\sigma}}}{1 - \frac{1}{\sigma}} + \varphi \frac{\left(1 + b_{t+k} \frac{1-\chi}{\chi}\right)^{1-\frac{1}{\eta}}}{1 - \frac{1}{\eta}} \right\},$$

where  $c_t^{\tau}$  is top earners' per capita consumption,  $b_t \frac{1-\chi}{\chi}$  is top earners' per capita tradable financial wealth, which takes the form of loans to bottom earners,  $\beta_{\tau}$  is the discount factor,  $\sigma$  and  $\eta$  parameterize the curvature of the utility function with respect to consumption and wealth, and  $\varphi$  is the weight of wealth in utility. These preferences nest the standard case of constant relative risk aversion (CRRA) consumption preferences for  $\varphi = 0$ .

When top earners lend to bottom earners, they offer  $p_t$  units of consumption today in exchange for 1 unit of consumption tomorrow in case bottom earners do not default. In case bottom earners do default, top earners receive  $(1 - h)$  units of consumption tomorrow, where  $h \in [0, 1]$  is the haircut parameter, the proportion of loans defaulted on in a crisis. Bottom earners default only rarely, because doing so entails large output and utility losses, as explained in Sections IIB and IIC. Consumption of each top earner is given by

$$(4) \quad c_t^{\tau} = y_t z_t \frac{1}{\chi} + (l_t - b_t p_t) \frac{1 - \chi}{\chi},$$

where  $b_t$  is the amount of debt per bottom earner issued in period  $t$  at price  $p_t$ , to be repaid in period  $t + 1$ , while  $l_t$  is the amount of debt per bottom earner repaid in period  $t$ . The decision to default is given by  $\delta_t \in \{0, 1\}$ , where  $\delta_t = 0$  corresponds to no default and  $\delta_t = 1$  corresponds to default. Then we have

$$(5) \quad l_t = b_{t-1}(1 - h\delta_t).$$

Top earners maximize (3) subject to (4) and (5). Their optimality condition is given by

$$(6) \quad p_t = \beta_\tau E_t \left[ \left( \frac{c_{t+1}^\tau}{c_t^\tau} \right)^{-\frac{1}{\sigma}} (1 - h\delta_{t+1}) \right] + \varphi \frac{\left( 1 + b_t \frac{1 - \chi}{\chi} \right)^{-\frac{1}{\eta}}}{(c_t^\tau)^{-\frac{1}{\sigma}}}.$$

This condition equates the costs and benefits of acquiring an additional unit of financial wealth. The cost equals the current utility loss from foregone consumption. The benefit equals not only next period's utility gain from additional consumption, but also the current utility gain from holding an additional unit of financial wealth.

### B. Bottom Earners

Bottom earners' utility from consumption  $c_t^b$  has the same functional form, and the parameter  $\sigma$  takes the same value, as for top earners. They do not derive utility from wealth.<sup>16</sup> Their lifetime utility is given by

$$(7) \quad V_t = E_t \sum_{k \geq 0} \beta_b^k \left\{ \frac{(c_{t+k}^b)^{1 - \frac{1}{\sigma}}}{1 - \frac{1}{\sigma}} \right\}.$$

Bottom earners' budget constraint is

$$(8) \quad c_t^b = y_t(1 - z_t)(1 - u_t) \frac{1}{1 - \chi} + (b_t p_t - l_t),$$

where  $u_t$  is the fraction of bottom earners' endowment that is absorbed by a penalty for current or past defaults. The output penalty  $y_t(1 - z_t)u_t$  represents an output loss to the economy. The fraction  $u_t$  is given by

$$(9) \quad u_t = \rho_u u_{t-1} + \gamma_u \delta_t,$$

where the impact effect of a default is given by  $\gamma_u$ , while the decay rate, in the absence of further defaults, is  $\rho_u$ .

Bottom earners maximize (7) subject to (8) and (9). Their optimality condition for consumption is given by

$$(10) \quad p_t = \beta_b E_t \left[ \left( \frac{c_{t+1}^b}{c_t^b} \right)^{-\frac{1}{\sigma}} (1 - h\delta_{t+1}) \right].$$

<sup>16</sup>Heterogeneity in preferences between lenders and borrowers is a common assumption in the literature, but has so far mostly taken the form of assuming different rates of time preference combined with borrowing constraints (e.g., Iacoviello 2005). In Bakshi and Chen (1996), the preference for wealth is specific to a social-wealth index, which captures the social group of reference, and is assumed to be increasing with the income of the group.

### C. Endogenous Default

At the beginning of period  $t$ , bottom earners choose whether to default on their past debt  $b_{t-1}$ . This, together with the haircut parameter  $h$ , defines the amount  $l_t$  that bottom earners repay during period  $t$ , according to equation (5). Their lifetime consumption utility  $V_t$  is a function of the state of the economy  $s_t = (l_t, y_t, z_t, u_t)$ , and is recursively defined by

$$V(s_t) = \frac{(c_t^b)^{1-\frac{1}{\sigma}}}{1 - \frac{1}{\sigma}} + E_t[V(s_{t+1})].$$

The decision to default  $\delta_t$  is a rational choice made at the beginning of the period, given a pre-default state  $\hat{s}_t = (b_{t-1}, y_t, z_t, u_{t-1})$ , by comparing the lifetime consumption utility values of defaulting  $V_t^D = V(\hat{s}_t, \delta_t = 1)$  and not defaulting  $V_t^N = V(\hat{s}_t, \delta_t = 0)$ . Bottom earners default when  $V_t^D - V_t^N$  is higher than an i.i.d. additive utility cost of default  $\xi_t$ , as in Pouzo and Presno (2012). We can therefore write the decision to default as:

$$(11) \quad \delta_t = \arg \max_{\delta_t \in \{0, 1\}} \{V_t^D - \xi_t, V_t^N\},$$

where  $V_t^D = V(b_{t-1}(1-h), y_t, z_t, \rho_u u_{t-1} + \gamma_u)$  and  $V_t^N = V(b_{t-1}, y_t, z_t, \rho_u u_{t-1})$ . The distribution of  $\delta_t$  depends upon the distribution of  $\xi_t$ . We have the simple formula

$$(12) \quad \text{prob}(\delta_t = 1 | \hat{s}_t) = \Xi(V_t^D - V_t^N),$$

where  $\Xi$  is the cumulative distribution function of  $\xi_t$ . We assume that  $\Xi$  takes the modified logistic form

$$(13) \quad \Xi(x) = \begin{cases} \frac{\psi}{1 + e(-\theta x)} & \text{if } x < \infty \\ 1 & \text{if } x = \infty \end{cases},$$

where  $\psi < 1$ . This implies that, over the economically relevant range, default occurs with positive probability but never with certainty.<sup>17</sup> The parameters  $\psi$ ,  $\theta$ ,  $\gamma_u$ , and  $\rho_u$  are calibrated to match the empirical evidence for the probability of crises, but with  $\gamma_u$  and  $\rho_u$  in addition constrained by the need to at least approximately match the evidence on the depth and duration of such crises. The parameter  $\psi$  helps to determine the mean level of crisis probability over the sample, while  $\theta$  determines the curvature of crisis probability with respect to the difference  $V_t^D - V_t^N$ .

<sup>17</sup>The cost takes an infinite value with probability  $1 - \psi$ , and finite values distributed according to the c.d.f.  $1/(1 + e(-\theta x))$  with probability  $\psi$ .

### D. Equilibrium

In equilibrium, top earners and bottom earners maximize their respective lifetime utilities, the market for borrowing and lending clears, and the market clearing condition for goods holds:

$$(14) \quad y_t(1 - (1 - z_t)u_t) = \chi c_t^\tau + (1 - \chi) c_t^b .$$

### E. Analytical Results

A small number of key parameters of our model affect the speed at which bottom earners' debt accumulates following a drop in their income share. Before discussing the calibration, it is therefore useful to analytically derive some relationships that clarify the role of these parameters.

*Debt Supply and Debt Demand.*—One implication of preferences for wealth is that a unique, stable deterministic steady state for financial wealth  $b_t$  exists. In this steady state, the Euler equations (6) and (10) can be interpreted as the hypothetical prices at which top earners and bottom earners would be willing to buy and sell debt while keeping their consumption constant. These equations therefore represent steady-state supply and demand functions for debt. Bottom earners' demand price as a function of debt,  $p(b)$ , is flat at<sup>18</sup>

$$(15) \quad p(b) = \beta_b ,$$

while top earners' supply price as a function of debt is implicitly given by

$$(16) \quad p(b) = \beta_\tau + \frac{\varphi \left( \bar{y} \bar{z} \frac{1}{\chi} + b(1 - p(b)) \frac{1 - \chi}{\chi} \right)^{\frac{1}{\sigma}}}{\left( 1 + b \frac{1 - \chi}{\chi} \right)^{\frac{1}{\eta}}} .$$

By combining (15) and (16), one obtains the steady-state relationship

$$(17) \quad \frac{\beta_b - \beta_\tau}{\varphi} = \frac{\left( \bar{y} \bar{z} \frac{1}{\chi} + \bar{b}(1 - \beta_b) \frac{(1 - \chi)}{\chi} \right)^{\frac{1}{\sigma}}}{\left( 1 + \bar{b} \frac{(1 - \chi)}{\chi} \right)^{\frac{1}{\eta}}} .$$

The numerator on the right-hand side, which equals  $(\bar{c}^\tau)^{1/\sigma}$ , is always positive because consumption utility satisfies the Inada conditions. Equation (17) therefore shows that for any model with preferences for wealth ( $\varphi > 0$ ), a steady state with

<sup>18</sup>The simplification of abstracting from default, for the purpose of this exercise, is justified by the fact that default has a negligible effect on the Euler equations in the neighborhood of the original steady state.

positive debt of bottom earners ( $\bar{b} > 0$ ) requires the condition  $\beta_b > \beta_\tau$ , which is therefore always satisfied in our calibration. However, this does not mean that top earners are more impatient than bottom earners. The reason is that their effective impatience is given by  $p(b)$  rather than simply by  $\beta_\tau$ . Effective impatience is therefore endogenous to the level of debt, and the effective steady state impatience of top earners is equal to the impatience of bottom earners.

*Changes in Steady-State Income and Preferences for Wealth.*—Differentiating (17), we can derive the effect of an increase in top earners' output share  $\bar{z}$  on the steady-state debt level  $\bar{b}$ ,

$$(18) \quad \frac{d \log(\bar{b})}{d \log(\bar{z})} = \frac{\frac{1}{\sigma} \left( \bar{y} \bar{z} \frac{1}{\chi} \right)}{\frac{1}{\eta} \frac{\bar{b} \frac{(1-\chi)}{\chi}}{1 + \bar{b} \frac{(1-\chi)}{\chi}} \bar{c}^\tau - \frac{1}{\sigma} \bar{b} (1 - \beta_b) \frac{(1-\chi)}{\chi}},$$

which can be shown to be positive for any plausible calibration, implying that an increase in income inequality raises the steady-state equilibrium level of debt.

The left and middle subplots of Figure 6 show initial credit demand (15) as the horizontal dash-dotted line at a price of debt of approximately 0.96. Initial credit supply (16) is shown as thick lines, and increased credit supply after a 10 percentage point increase in the top 5 percent income share as thin lines. The solid lines represent the baseline, and the dashed and dotted lines show the effects of varying, relative to the baseline, the parameters  $\varphi$  or  $\eta$ , while adjusting  $\beta_\tau$  to remain consistent with an unchanging initial level of steady-state debt. The left subplot shows that, while the size of the increase in steady-state debt following the increase in credit supply is independent of  $\varphi$ , a higher  $\varphi$  increases the slope of the credit supply schedule. Therefore, with debt starting out at its initial low-debt steady state, a higher  $\varphi$  implies that top earners are willing to more aggressively lower interest rates on debt (raise the price of debt) to move toward the new high-debt steady state at a higher speed. The middle subplot shows that a higher  $\eta$ , meaning a lower curvature of the utility function with respect to wealth, leads to more financial wealth accumulation. The reason is that a higher  $\eta$  reduces the rate at which marginal utility falls in response to increases in wealth, so that top earners limit the increase in their consumption more strongly in order to accumulate more wealth.

*The Marginal Propensity to Save.*—At shorter horizons of 20–40 years, the effects of higher  $\varphi$  and higher  $\eta$  are hard to distinguish, because both tend to increase the rate at which debt increases following a permanent increase in income inequality. The marginal propensity to save (MPS) of top earners following a permanent income shock is a function of both  $\varphi$  and  $\eta$ . The model-based formula for the MPS is derived in the online Appendix of this paper. The right subplot of Figure 6 shows how different combinations of  $\varphi$  and  $\eta$  translate into different MPS in that formula.



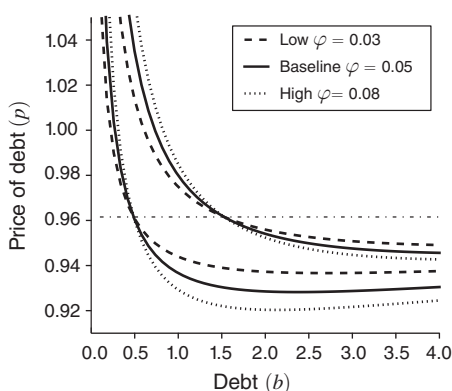
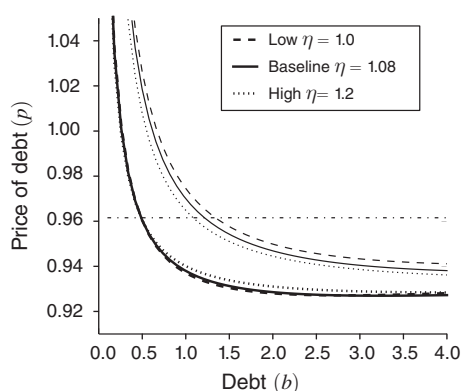
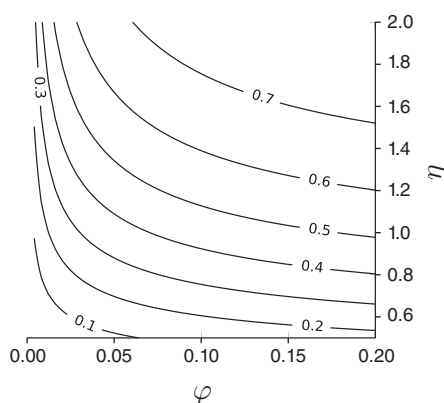
Panel A. Income inequality shock: role of  $\varphi$ Panel B. Income inequality shock: role of  $\eta$ Panel C. MPS for various combinations ( $\varphi$ ,  $\eta$ )

FIGURE 6. PREFERENCES FOR WEALTH AND STEADY-STATE DEBT

### III. Calibration and Solution Method

#### A. Calibration

We calibrate the model at the annual frequency. Top earners and bottom earners correspond to the top 5 percent and the bottom 95 percent of the income distribution, respectively,  $\chi = 0.05$ . The model combines two key mechanisms, the accumulation of debt by bottom earners following a permanent increase in income inequality, and a rational default decision, with default probabilities increasing in the level of debt. An increase in the default probability interacts with the speed of debt accumulation through an increase in default risk premia. However, default is partial, and default probabilities are low, ranging from 2.2 percent in 1983 to 5.1 percent in 2008, when calibrated based on the empirical evidence of Schularick and Taylor (2012). This implies that the effects of default risk on debt accumulation are very limited during the 1983–2008 period. The calibration exercise is therefore made more transparent by separating parameters related to debt accumulation and to the default mechanism.

*Debt Accumulation.*—

**Preferences:** Following many papers in the business cycle literature, the curvature of the utility function with respect to consumption is fixed at  $\sigma = 0.5$  for both top and bottom earners. The detailed calibration procedure for the preference for wealth parameters  $\varphi$  and  $\eta$  is described in the online Appendix. We first use our theoretical model to derive an approximate formula for top earners' MPS out of permanent income shocks. We then use the empirical methodology of Dynan, Skinner, and Zeldes (2004) to estimate the empirical counterpart of this formula, using SCF and PSID data. Finally, the model's preference for wealth parameters  $\varphi$  and  $\eta$  are calibrated by equating the model-based MPS to the data-based MPS. We find that saving rates are a steeply increasing function of income, and obtain a baseline MPS of top earners of 0.397, with a lower bound of 0.248 and an upper bound of 0.505.<sup>19</sup> The resulting baseline parameter values are  $\varphi = 0.05$  and  $\eta = 1.09$ .<sup>20</sup> Because we are matching one MPS using two parameters, these values are not unique, but as shown in Section IVD, changing the combination of  $\varphi$  and  $\eta$  at a given MPS has a very small effect on our results.

**Initial Steady State:** Steady-state output is normalized to 1,  $\bar{y} = 1$ . The steady-state net real interest rate is fixed at 4 percent per annum, similar to values typically used in the real business cycle literature, by fixing bottom earners' discount factor at  $\beta_b = 1.04^{-1}$ . We calibrate the initial steady state of the debt-to-income ratio  $\lambda_t$  and of the top 5 percent income share  $\tau_t$  to be equal to their 1983 counterparts. In the model,  $\lambda_t$  is given by<sup>21</sup>

$$(19) \quad \lambda_t = \frac{(1 - \chi) l_t}{y_{t-1}(1 - z_{t-1})(1 - u_{t-1})}.$$

We choose  $\beta_\tau$  to replicate  $\bar{\lambda}$  in 1983, which equals 62.3 percent. To calibrate the 1983 value of  $\tau_t$  we use the data computed by Piketty and Saez (2003, updated), which include interest income but exclude interest payments in the computation of annual gross incomes. The model counterpart is given by

$$(20) \quad \tau_t = \frac{y_t z_t + (1 - \chi) l_t (1/p_{t-1} - 1)}{y_t (1 - u_t (1 - z_t)) + (1 - \chi) l_t (1/p_{t-1} - 1)}.$$

We choose  $\bar{z}$  to replicate  $\bar{\tau}$  in 1983, which equals 21.8 percent.

**Exogenous Shock Processes:** We estimate the exogenous stochastic process for output  $y_t$  using the detrended series of US real GDP from 1983 to 2010 obtained from

<sup>19</sup>By considering a wide range of different MPS estimates, we have taken into account the inevitable uncertainty associated with alternative methods of estimating this magnitude.

<sup>20</sup>We note that the relationship  $\eta > \sigma$  is consistent with the preference for wealth specification of Carroll (2000).

<sup>21</sup>This ratio is defined to be consistent with SCF data, where debt liabilities are measured during the first semester of the Survey—at the time of the interview—while income refers to income in the year prior to the survey.

the BEA. Our estimates are  $\rho_y = 0.669$  and  $\sigma_y = 0.012$ . For the years 1983–2008 of the baseline simulation we calibrate the shocks  $\epsilon_{y,t}$  to exactly match the detrended data, while all subsequent shocks are set to zero.

The exogenous stochastic process for the top 5 percent output share  $z_t$  is parameterized by specifying  $\rho_z$  and  $\sigma_z$  such that the behavior of  $\tau_t$  matches that of the updated Piketty and Saez (2003) data series from 1983 to 2010. Using standard tests, the hypothesis that this data series has a unit root cannot be rejected. In the baseline model, we therefore calibrate  $\rho_z = 1$ , and then estimate  $\sigma_z = 0.008$  from the data. For the years 1983–2008 of the baseline simulation we calibrate the shocks  $\epsilon_{z,t}$  such that  $\tau_t$  exactly matches the data, with all subsequent shocks set to zero.

**Targeted and Non-targeted Facts:** Table 1 summarizes the calibration of the model, with the exception of the default parameters. This part of the model has ten exactly identified parameters and two ( $\varphi$  and  $\eta$ ) that are matched using empirical estimates of the MPS of top earners. Importantly, the use of empirical estimates to independently calibrate the preference for wealth parameters of top earners implies that matching the post-1983 evolution of the debt-to-income ratio of bottom earners is not a target of the calibration. A comparison of its simulated evolution with the data will therefore serve to evaluate the empirical success of our model.<sup>22</sup>

*Default Mechanism.*—The haircut, or percentage of loans defaulted upon during the crisis, is set to  $h = 0.1$ , which is approximately consistent with the empirical evidence in Section IE. The size of default  $\gamma_u = 0.04$  and the depth of the crisis  $\rho_u = 0.65$  are calibrated to give rise to default events that are reasonably close to what has been observed during the Great Depression, while triggering default decisions that are consistent with the estimated probabilities of crises. Our calibration implies a slightly less than 3 percent loss in aggregate output on impact, and a cumulative output loss of around 8 percent of annual output, less than what was observed during the Great Recession. However, what matters for the default decision is the *expected* depth of the contraction. Few observers had anticipated the Great Recession, and once it had started, most observers initially underestimated its full severity (Dominguez and Shapiro 2013).

The random utility cost parameters  $\psi = 0.15$  and  $\theta = 18$  are chosen so that, combined with the output cost parameters  $\gamma_u$  and  $\rho_u$ , they closely match the Schularick and Taylor (2012) probability of crises in 1983 and 2008,<sup>23</sup> thereby also approximating the trend in its evolution between these two dates. Our calibration implies that the maximum theoretically possible default probability, at extremely high debt levels, is 15 percent, with actual default probabilities generally well below that.<sup>24</sup> It can be shown that, at debt and income levels where default occurs with a probability of 5 percent, roughly the magnitude reached just prior to the Great

<sup>22</sup>The ability of our simple endowment model to match the behavior of the interest rate, which is also non-targeted, if of course very limited.

<sup>23</sup>The crisis probabilities in our calibrated model are 2.19 percent in 1983 and 5.08 percent in 2008, while the probabilities estimated according to Schularick and Taylor (2012) are 2.04 percent in 1983 and 5.16 percent in 2008.

<sup>24</sup>Between 1900 and 2008, the maximum probability of a US crisis, estimated according to Schularick and Taylor (2012), is 5.7 percent.

TABLE 1—CALIBRATION OF THE BASELINE MODEL EXCEPT DEFAULT

	Source/target	Implied values
<i>Panel A. Directly calibrated parameters</i>		
Steady-state output level	Normalization	$\bar{y} = 1$
Population share of top earners	5 percent	$\chi = 0.05$
Steady-state real interest rate	Literature	$\beta_b = 1.04^{-1}$
IES in consumption	Literature	$\sigma = 0.5$
<i>Panel B. Indirectly calibrated parameters</i>		
Top earners' weight on wealth in utility	MPS of top earners	$\varphi = 0.05$
Top earners' wealth elasticity	MPS of top earners	$\eta = 1.09$
Steady-state top 5 percent income share $\bar{\tau}$	Data: 21.8 percent in 1983	$\bar{z} = 0.1807$
Steady-state debt-to-income ratio $\bar{\lambda}$	Data: 62.3 percent in 1983	$\beta_\tau = 0.912$
<i>Panel C. Exogenous stochastic processes</i>		
Output	Estimated	$\rho_y = 0.669$
		$\sigma_y = 0.012$
Output shares	Estimated	$\rho_z = 1$
		$\sigma_z = 0.008$

TABLE 2—CALIBRATION OF THE MODEL'S DEFAULT PARAMETERS

	Source/target	Implied values
<i>Default parameters</i>		
Haircut (percent of loans defaulted)	Data (cf. Section IE)	$h = 0.1$
Output penalty	Output costs of 2008 crisis	$\gamma_u = 0.04$
	Size and depth	$\rho_u = 0.65$
Random utility cost of default	Schularick and Taylor (2012)	$\psi = 0.15$
	Default probabilities (1983–2008)	$\theta = 18$

Recession, the random utility cost of default needed to trigger the financial crisis is a negative utility cost equivalent to an approximately 3.3 percent change in the consumption of bottom earners.

### B. Solution Method

Our model has two features that advise against the application of conventional perturbation methods. The first is the presence of default, which implies large discrete jumps in state variables. The second is the fact that the stochastic process for income shares  $z_t$  is random walk, which in our simulations implies that bottom earners' debt-to-income ratio permanently drifts far away from its original steady state. We therefore use a global solution technique that adapts the time-iterative policy function algorithm described by Coleman (1991). The computational procedure is detailed in the online Appendix.<sup>25</sup>

## IV. Results

Figures 7–13 present simulation results that first explore the properties of the model and then its ability to match the behavior of key historic time series that pertain to the inequality-leverage-crises nexus.

<sup>25</sup>The documented codes to replicate the numerical results are available on the AER website.

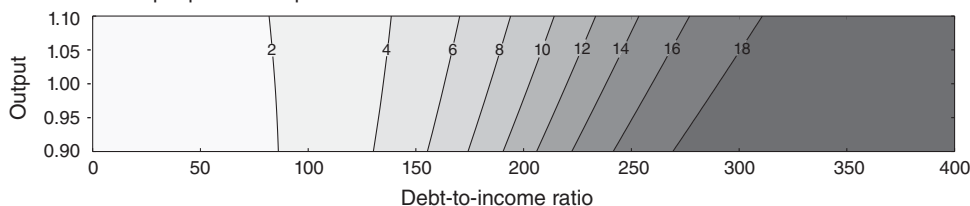
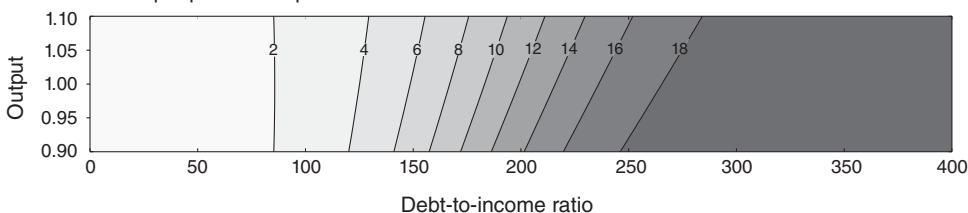
Panel A. 1983 top 5 percent output share:  $z=0.202$ Panel B. 2008 top 5 percent output share:  $z=0.330$ 

FIGURE 7. DEFAULT REGIONS

### A. Default Regions

In our model, due to random utility costs, the state space is divided into regions with a continuum of probabilities of default. Figure 7 contains a visual representation that divides the state space into regions whose boundaries represent default probabilities that increase in equal increments of two percentage points. Each subplot shows the debt-to-income ratio<sup>26</sup> on the horizontal axis and output on the vertical axis. The effect of variations in the third state variable, the top output share, is illustrated by showing two separate subplots, corresponding to the 1983 and 2008 top output shares.

We observe that higher debt levels imply a higher crisis probability, by increasing the benefits of defaulting without affecting the costs. Over the historically observed range of debt levels, the implied crisis probabilities range from 2.2 percent to 5.1 percent. As is standard in this class of models, default is more likely to occur when output is low, because at such times the insurance benefits of default are high while the output costs of default are low. Small drops in income start to have a significantly larger effect on default probabilities as we move from regions of low debt to regions of very high debt. For the same reasons as for lower output, higher top output shares also lead to higher crisis probabilities. But their direct effect, beyond the effect that operates through higher debt accumulation, is very modest.

### B. Impulse Responses

Figure 8 shows a one standard deviation positive shock to aggregate output  $y_t$ . This shock allows both top earners and bottom earners to increase their consumption, so

<sup>26</sup>We show the debt-to-income ratio rather than the state variable debt because the former is a key variable in our model. Its units are therefore more intuitive and easier to interpret.

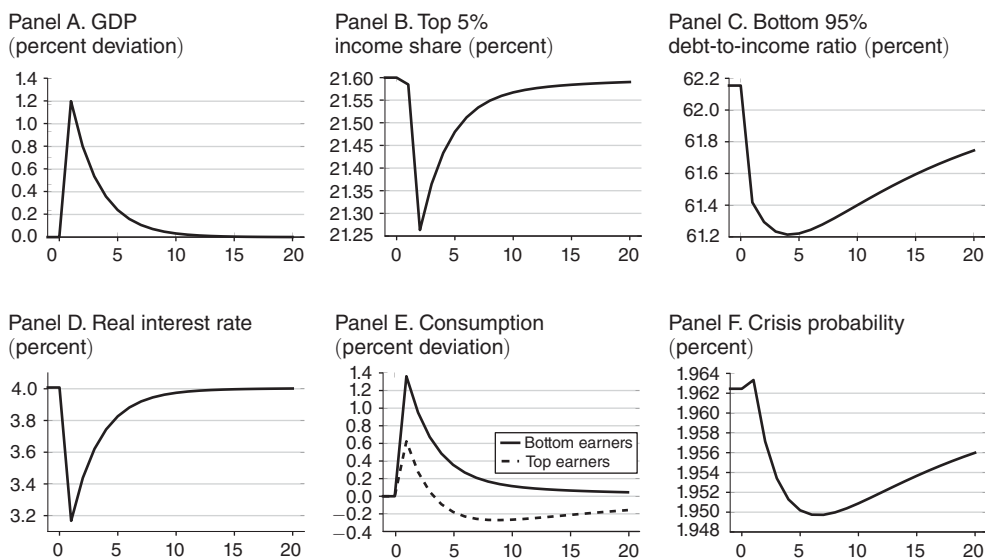


FIGURE 8. IMPULSE RESPONSES: OUTPUT SHOCK

that the equilibrium loan interest rate drops by around 85 basis points on impact, with a subsequent increase back to its long-run value that mirrors the gradual decrease in output. The drop in the interest rate represents an additional income gain for bottom earners relative to top earners, so that the top 5 percent income share falls by around 0.35 percentage points. Bottom earners smooth their income gain over time by decreasing their debt-to-income ratio by around 0.8 percentage points on impact, while still increasing their consumption by more than twice as much as top earners.

Figure 9 shows a one standard deviation permanent shock to the output share  $z_t$ . The top 5 percent income share  $\tau_t$  immediately increases by 0.8 percentage points, accompanied by a downward jump of 0.5 percent in bottom earners' consumption and an upward jump of 1.9 percent in top earners' consumption. The long-run increase in top earners' consumption is even larger, because they initially limit their additional consumption in order to accumulate additional financial wealth. The process of debt accumulation takes several decades, with bottom earners' debt-to-income ratio increasing by around 7 percentage points in the very long run, accompanied by an increase in crisis probability of 0.13 percentage points. The real interest rate falls on impact by 9 basis points, due to the increase in credit supply from top earners that initially limits the drop in consumption of bottom earners. The top 5 percent income share  $\tau_t$ , because it includes not only the output share  $z_t$  but also the interest earnings on increasing financial wealth, increases in the long run by approximately another 0.1 percentage points, and top (bottom) earners' long-run increase (decrease) in consumption is correspondingly larger. We note that the one standard deviation income distribution shock in Figure 9 is small compared to what occurred over the period 1983–2008.

Figure 10 shows the impulse response for a crisis shock. Bottom earners default on 10 percent of their loans, but they also experience a 4 percent loss in income due to the output costs of default, which are suffered exclusively by this group of agents. As a result their debt-to-income ratio only drops by around 3.9 percentage points.

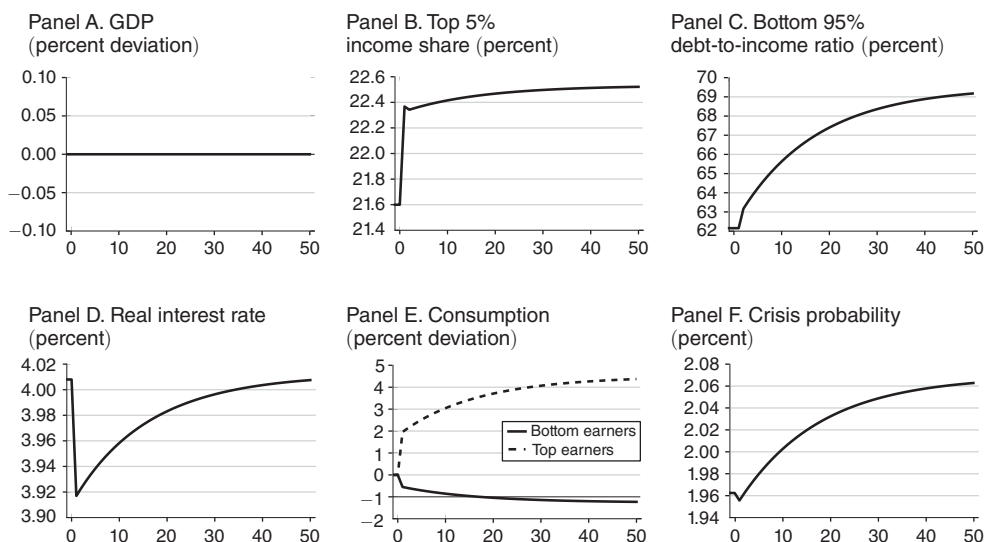


FIGURE 9. IMPULSE RESPONSES: INCOME DISTRIBUTION SHOCK

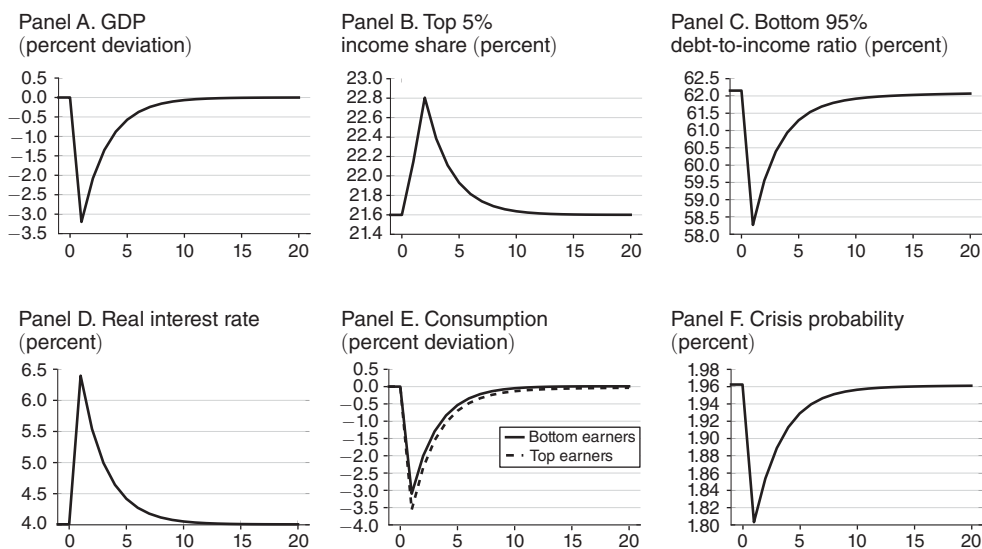


FIGURE 10. IMPULSE RESPONSES: CRISIS

The impact effect on the real economy is a 3.2 percent loss in GDP, followed by a V-shaped recovery. The real interest rate mirrors developments in output, with an initial increase of 2.4 percentage points followed by a return to the original interest rate level after about a decade. Consumption of top earners and bottom earners follows an almost identical profile after the crisis. Top earners suffer a loss on their financial wealth, but this is more than compensated by the temporary increase in the real interest rate, so that the top 5 percent income share increases by around 1.2 percentage points on impact. Top earners lend after the crisis, in order to return their financial wealth to the desired level. The counterpart of this is reborrowing by



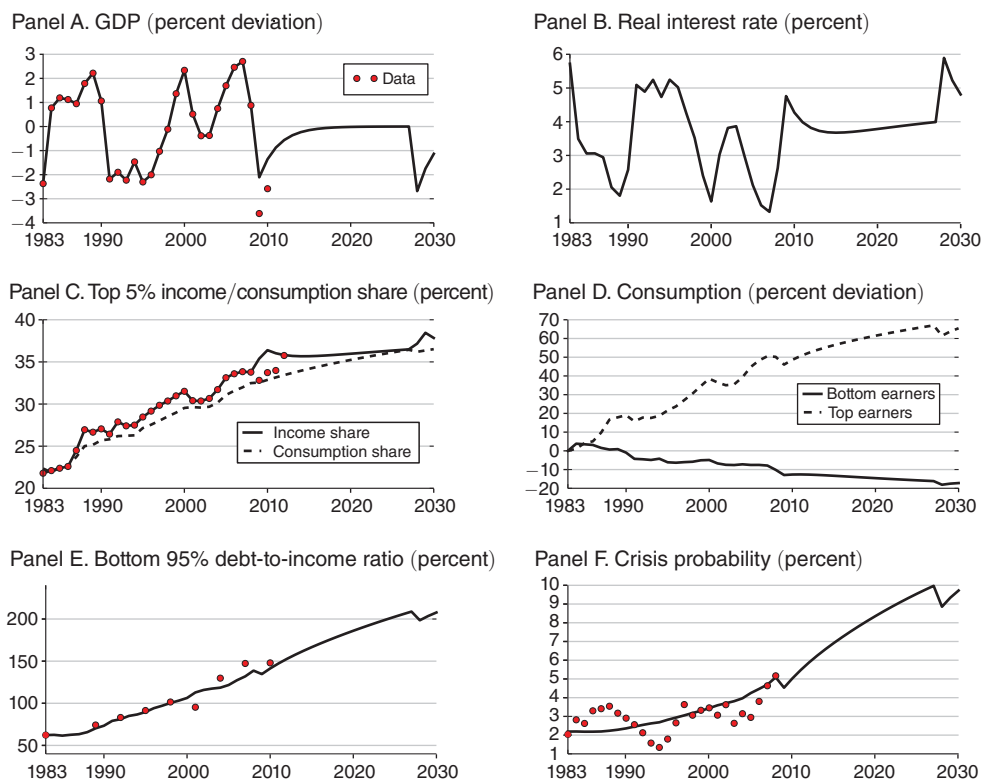


FIGURE 11. BASELINE SCENARIO

bottom earners.<sup>27</sup> As a result, bottom earners' debt-to-income ratio is almost back to its original level after about one decade.

### C. Baseline Scenario

Figure 11 shows the central simulation of the paper. The variables shown are the same, and are shown in the same units, as in the impulse responses in Figures 8–10. The horizontal axis represents time, with the simulation starting in 1983 and ending in 2030. The circular markers represent US data, while the lines represent model simulations. The data for GDP and for the top 5 percent income share are used as forcing processes that pin down the realizations of the shocks  $\epsilon_{y,t}$  and  $\epsilon_{z,t}$  between 1983 and 2008. Post-2008 data for GDP and the top 5 percent income share are shown but are not used as forcing processes. Because this is an endowment economy, interest rate fluctuations mirror output fluctuations. We assume that a crisis shock hits in 2009. The crisis event in 2009 is, as discussed above, characterized by output losses that are somewhat lower than observed during the Great Recession. Starting in 2009, the model is simulated assuming a random sequence of utility cost shocks, but no further nonzero realizations of output or output share shocks. Because the preceding shocks imply further increases in debt after 2009, this

<sup>27</sup> A model with borrowing constraints would limit reborrowing. However, data from the crisis period show that, while the crisis stopped mortgage debt from increasing further, unsecured debt kept increasing.

means that future endogenous crises remain a possibility, and in fact become increasingly likely.

The key forcing variable is the increase in the top 5 percent income share from 21.8 percent in 1983 to 33.8 percent in 2008. In the baseline calibration, the marginal propensity to save of top earners is equal to 0.397. Therefore, top earners save a sizable share of their additional income in order to acquire additional financial wealth, in other words to lend to bottom earners. Bottom earners' debt-to-income ratio therefore increases from 62.3 percent in 1983 to 131.9 percent in 2007 and 138.8 percent in 2008, accompanied by an increase in crisis probability from 2.2 percent in 1983 to 5.1 percent in 2008. In the data, the debt-to-income ratio increases from 62.3 percent in 1983 to 147.3 percent in 2007. Potential explanations for the 15.4 percentage point 2007 difference between model and data are discussed in Section IVD.

While the initial debt-to-income ratio in the model and in the data were matched through the calibration of the initial steady state, its post-1983 evolution was not targeted in our calibration. The fact that we nevertheless closely match it, after calibrating the preference for wealth specification on the basis of independent micro-economic evidence, is therefore a measure of the empirical success for our model. By matching the increase in debt we also match the increase in crisis probability, but this is not an additional independent success of the model, since the default mechanism was calibrated so as to replicate the empirical link between leverage and crisis probabilities.

In the baseline scenario, top earners increase their consumption by a cumulative 50 percent until just prior to the Great Recession, while bottom earners reduce their consumption by 10 percent. The simulated top 5 percent consumption share, which is shown in the same subplot as the top 5 percent income share, also increases between 1983 and 2008, but by less than the income share. This is a necessary consequence of the fact that top earners are lending, and are therefore maintaining lower consumption levels than what their income alone would permit. There is an ongoing debate in the empirical literature about the relative evolution of consumption inequality and income inequality.<sup>28</sup> The results of this literature are however not directly comparable to our results, because it has so far not produced an empirical estimate of the top 5 percent consumption share that would correspond to our model simulations.

For the future, the model predicts a further increase of the income share of top earners, not because of further increases in their output share  $z_t$  but rather because of further increases in debt and associated interest charges. Bottom earners' simulated debt-to-income ratio increases from around 140 percent to around 180 percent over the post-crisis decade, accompanied by an increase in crisis probability from around 5 percent to around 8 percent. Under the random sequence of utility cost shocks used in our simulation, the model generates one subsequent crisis in 2028.

<sup>28</sup> Krueger and Perri (2006) argue that consumption inequality increased by much less than income inequality between 1983 and 2003. These results have recently been challenged by Aguiar and Bils (2011), who estimate that the increases in consumption and income inequality mirror each other much more closely. Attanasio, Hurst, and Pistaferri (2012) confirm the results of Aguiar and Bils (2011). By contrast, Meyer and Sullivan (2013) find that the rise in income inequality has been more pronounced than the rise in consumption inequality.

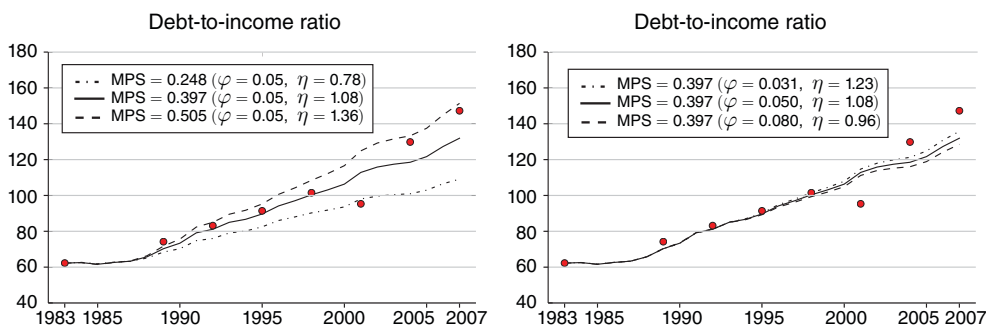


FIGURE 12. SENSITIVITY ANALYSIS

The effect of the crisis on bottom earners' debt-to-income ratio in the model is modest, it drops by around four percentage points on impact but then immediately resumes its upward trajectory. The reason is the continuing upward trend in top earners' financial wealth accumulation, as a result of previous favorable shocks to their income share.

#### D. Empirical Performance of the Model

The crucial implication of the MPS-based calibration is that the 1983–2007 evolution of the debt-to-income ratio of bottom earners can be used to evaluate the quantitative performance of the model.<sup>29</sup> The left subplot of Figure 12 illustrates that this performance depends on the calibrated value of the MPS. For this figure, we calibrate the model based on the baseline MPS of 0.397, the upper bound MPS of 0.505, and the lower bound MPS of 0.248. Our baseline simulation is reproduced as the solid line, the data as circular markers, and lower and upper bound MPS as dash-dotted and dotted lines. Differences in MPS are calibrated by holding  $\varphi$  at its baseline value of 0.05 and varying  $\eta$ , with a higher  $\eta$  (higher MPS) implying that top earners allocate a larger share of their additional income to financial wealth accumulation. The interest rate adjusts to ensure that this higher credit supply is taken up by bottom earners, who end up with a higher debt-to-income ratio.

The baseline model tracks the overall trend in the data well. By 2007, the model predicts a debt-to-income ratio of 131.9 percent, versus 147.1 percent in the data. The upper-bound model slightly over-predicts over the period 1992–1998 but is closer to the data toward the end of the period. The lower-bound model under-predicts throughout. However, even this calibration predicts a 1983–2007 increase in bottom earners' debt-to-income ratio of around 47 percentage points, which equals well over one-half of the increase observed in the data. Overall, the baseline model explains close to 100 percent of the increase in the debt-to-income ratio of bottom earners over the first 15 years of the period of interest (1983–1998), and approximately 70 percent over the last 9 years (1998–2007). This suggests a possible role for complementary explanations over the latter period. As discussed in Section IF, the global saving glut

<sup>29</sup> We focus on this period because the model is simulated over 1983–2008 for a series of inequality and output shocks that exactly reproduce the data. 2007 is the last pre-crisis data point in SCF.

can explain around one-quarter of the increase in US household debt over this period. This is roughly the share of household debt that is left unexplained by our model.

The right subplot of Figure 12 shows that, once a MPS has been chosen (in this case the baseline MPS of 0.397), differences in the combinations of  $\varphi$  and  $\eta$  that give rise to that MPS have only a very small effect on the model's predictions. We note that the combinations of  $\varphi$  and  $\eta$  shown in Figure 12 differ by a very substantial margin, with the upper bound  $\varphi$  60 percent larger than the baseline (0.08), and the lower bound  $\varphi$  60 percent smaller than the baseline (0.031). Yet the implied differences in the behavior of the debt-to-income ratio are very small. What matters is therefore primarily the MPS itself, for which we have produced solid empirical evidence in the online Appendix.

### *E. Pure Consumption Smoothing and Shock Persistence*

In our baseline scenario, the increase in bottom earners' debt is due to increased credit supply from top earners. The reason is that shocks to the income distribution are permanent, so that neither bottom earners nor top earners have an incentive to smooth consumption, while top earners have a strong incentive to accumulate wealth.

The permanence of shocks to the income distribution is consistent with the evolution of income inequality between 1983 and 2008, and with the evidence of Kopczuk, Saez, and Song (2010) and DeBacker et al. (2013). It is nevertheless interesting to ask what quantitative role pure consumption smoothing, in the complete absence of a wealth accumulation motive, could play if shocks to the income distribution were perceived to be more temporary. In that case top earners would have no motive to accumulate wealth for its own sake, while both bottom and top earners would have a stronger incentive to borrow and lend to smooth consumption. In other words, in such a world there would be an increased role for credit demand relative to credit supply.

For this exercise we perform another variation of our baseline simulation in which wealth does not enter the utility function of top earners ( $\varphi = 0$ ), both income groups have the same discount factor ( $\beta_b = \beta_\tau = 1.04^{-1}$ ), and shocks to the inequality process are highly persistent but not permanent. The initial values of all endogenous variables are identical to the baseline case. The results are shown in Figure 13, under the assumption  $\rho_z = 0.98$ .

We observe that for this particular persistence parameter the effects of consumption smoothing are similar to those of preferences for wealth in the baseline, with both debt and crisis probability increasing by similar magnitudes prior to the crisis. But this would change dramatically for a less persistent  $z_t$ . In that case the consumption smoothing motive would become very much stronger, because it would imply that bottom earners continually expect their income to revert to a much higher level over a fairly short period. The cumulative effect of this perception, which would represent large and one-sided forecast errors over the 1983–2008 period, would be a much larger build-up of debt.

## **V. Conclusions**

This paper has presented stylized facts, a theoretical framework, and an empirical methodology for calibrating it, that explore the nexus between increases in the

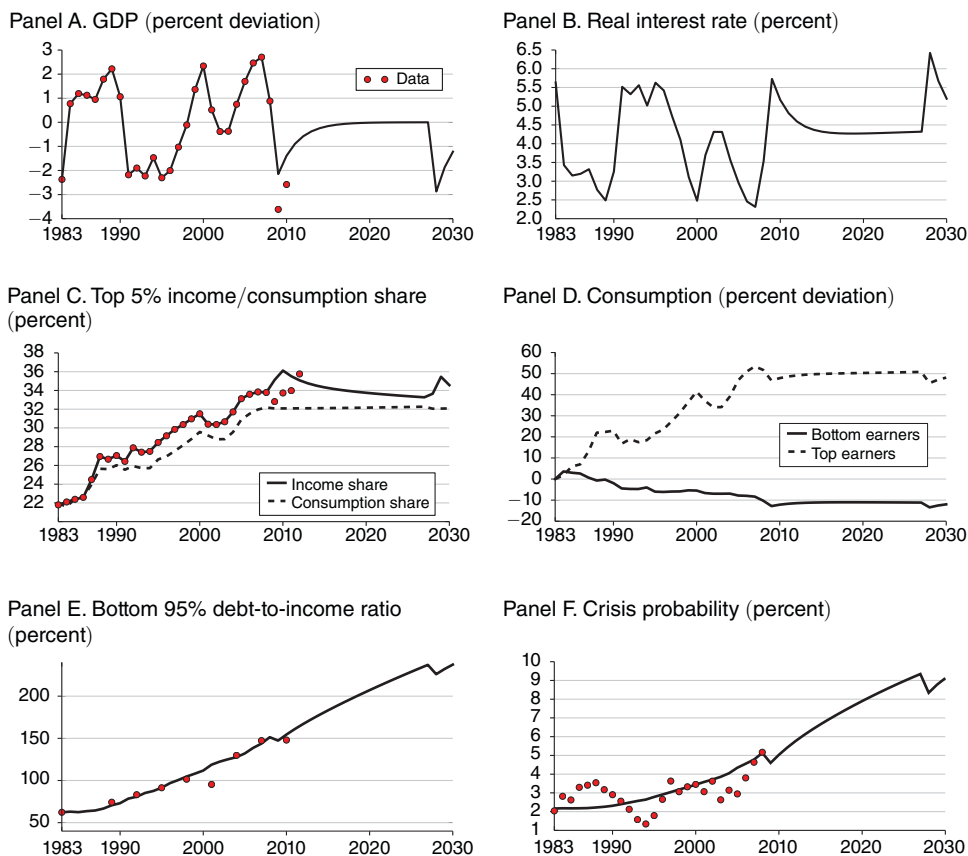


FIGURE 13. CONSUMPTION SMOOTHING SCENARIO

income share of high-income households, higher debt leverage among poor and middle-income households, and vulnerability to financial crises. We provide evidence which suggests that this nexus was prominent prior to both the Great Depression and the Great Recession. In our baseline, theoretical model higher debt leverage arises as a result of permanent positive shocks to the income share of high-income households who, due to preferences for wealth, lend part of their additional income back to poor and middle-income households. This increase in credit supply allows poor and middle-income households to sustain higher consumption levels. But the result is that loans keep growing, and therefore so does the probability of a crisis that, when it happens, is accompanied by a contraction in the real economy. This contraction, together with a desire of high-income households to accumulate further wealth while their income share remains high, implies that the effect of a crisis on debt leverage and therefore on the probability of further crises is quite limited.

It is possible to use our framework to simulate alternative scenarios for the future of the US economy. One alternative, studied in Kumhof, Ranci re, and Winant (2013), looks at the consequences of a reversal of the post-1983 increase in income inequality over a period of ten years. We find that this would lead to a sustained reduction in leverage that would significantly reduce the probability of further crises.

## REFERENCES

- Adelino, Manuel, Antoinette Schoar, and Felipe Severino. 2012. "Credit Supply and House Prices: Evidence from Mortgage Market Segmentation." National Bureau of Economic Research Working Paper 17832.
- Aguiar, Mark A., and Mark Bils. 2011. "Has Consumption Inequality Mirrored Income Inequality?" National Bureau of Economic Research Working Paper 16807.
- Arellano, Cristina. 2008. "Default Risk and Income Fluctuations in Emerging Economies." *American Economic Review* 98 (3): 690–712.
- Attanasio, Orazio, Erik Hurst, and Luigi Pistaferri. 2012. "The Evolution of Income, Consumption, and Leisure Inequality in the US, 1980–2010." National Bureau of Economic Research Working Paper 17982.
- Bakshi, Gurdip S., and Zhiwu Chen. 1996. "The Spirit of Capitalism and Stock-Market Prices." *American Economic Review* 86 (1): 133–57.
- Calder, Lendol. 1999. *Financing the American Dream: A Cultural History of Consumer Credit*. Princeton, NJ: Princeton University Press.
- Carroll, Christopher D. 2000. "Why Do the Rich Save So Much?" In *Does Atlas Shrug? The Economic Consequences of Taxing the Rich*, edited by Joel B. Slemrod, 465–84. Cambridge, MA: Harvard University Press.
- Coibion, Olivier, Yuriy Gorodnichenko, Marianna Kudlyak, and John Mondragon. 2014. "Does Greater Inequality Lead to More Household Borrowing? New Evidence from Household Data." National Bureau of Economic Research Working Paper 19850.
- Coleman, Wilbur John, II. 1991. "Equilibrium in a Production Economy with an Income Tax." *Econometrica* 59 (4): 1091–104.
- DeBacker, Jason, Bradley Heim, Vasia Panousi, Shanthi Ramnath, and Ivan Vidangos. 2013. "Rising Inequality: Transitory or Persistent? New Evidence from a Panel of US Tax Returns." *Brookings Papers on Economic Activity* 46 (1): 67–122.
- Dominguez, Kathryn M. E., and Matthew D. Shapiro. 2013. "Forecasting the Recovery from the Great Recession: Is This Time Different?" *American Economic Review* 103 (3): 147–52.
- Dynan, Karen E., Jonathan Skinner, and Stephen P. Zeldes. 2004. "Do the Rich Save More?" *Journal of Political Economy* 112 (2): 397–444.
- Favara, Giovanni, and Jean Imbs. 2010. "Credit Supply and the Price of Housing." Centre for Economic Policy Research Discussion Paper 8129.
- Francis, Johanna L. 2009. "Wealth and the Capitalist Spirit." *Journal of Macroeconomics* 31 (3): 394–408.
- Gärtner, Katharina. 2013. "Household Debt and Economic Recovery: Evidence from the US Great Depression." European Historical Economics Society Working Papers in Economic History 36.
- Iacoviello, Matteo. 2005. "House Prices, Borrowing Constraints, and Monetary Policy in the Business Cycle." *American Economic Review* 95 (3): 739–64.
- Iacoviello, Matteo. 2008. "Household Debt and Income Inequality, 1963–2003." *Journal of Money, Credit, and Banking* 40 (5): 929–65.
- Justiniano, Alejandro, Giorgio E. Primiceri, and Andrea Tambalotti. 2014. "The Effects of the Saving and Banking Glut on the US Economy." *Journal of International Economics* 92 (Supplement): 52–67.
- Kopczuk, Wojciech, Emmanuel Saez, and Jae Song. 2010. "Earnings Inequality and Mobility in the United States: Evidence from Social Security Data since 1937." *Quarterly Journal of Economics* 125 (1): 91–128.
- Krueger, Dirk, and Fabrizio Perri. 2006. "Does Income Inequality Lead to Consumption Inequality? Evidence and Theory." *Review of Economic Studies* 73 (1): 163–93.
- Kumhof, Michael, and Romain Rancière. 2010. "Inequality, Leverage and Crises." International Monetary Fund Working Paper 10/268.
- Kumhof, Michael, Romain Rancière, and Pablo Winant. 2013. "Inequality, Leverage and Crises: The Case of Endogenous Default." International Monetary Fund Working Paper 13/249.
- Kumhof, Michael, Romain Rancière, and Pablo Winant. 2015. "Inequality, Leverage and Crises: Dataset." *American Economic Review*. <http://dx.doi.org/10.1257/aer.20110683>.
- Levitin, Adam J., and Susan M. Wachter. 2012. "Explaining the Housing Bubble." *Georgetown Law Journal* 100 (4): 1177–258.
- Meyer, Bruce D., and James X. Sullivan. 2013. "Consumption Inequality and Income Inequality in the US Since the 1960s." <http://www3.nd.edu/~jsullivan4/Inequality3.6.pdf> (accessed January 12, 2015).
- Mian, Atif, and Amir Sufi. 2009. "The Consequences of Mortgage Credit Expansion: Evidence from the US Mortgage Default Crisis." *Quarterly Journal of Economics* 124 (4): 1449–96.



- Olney, Martha L.** 1991. *Buy Now, Pay Later: Advertising, Credit, and Consumer Durables in the 1920s*. Chapel Hill, NC: University of North Carolina Press.
- Olney, Martha L.** 1999. "Avoiding Default: The Role of Credit in the Consumption Collapse of 1930." *Quarterly Journal of Economics* 114 (1): 319–35.
- Philippon, Thomas.** 2013. "Has the US Finance Industry Become Less Efficient? On the Theory and Measurement of Financial Intermediation." National Bureau of Economic Research Working Paper 18077.
- Philippon, Thomas, and Virgiliu Midrigan.** 2011. "Household Leverage and the Recession." National Bureau of Economic Research Working Paper 16965.
- Piketty, Thomas, and Emmanuel Saez.** 2003. "Income Inequality in the United States, 1913–1998." *Quarterly Journal of Economics* 118 (1): 1–39.
- Piketty, Thomas, and Gabriel Zucman.** 2014. "Capital is Back: Wealth-Income Ratios in Rich Countries, 1700–2010." *Quarterly Journal of Economics* 129 (3): 1255–310.
- Plummer, Wilbur C.** 1927. "Social and Economic Consequences of Buying on the Instalment Plan." *Annals of the American Academy of Political and Social Science* 129 (Supplement): 1–57.
- Pouzo, Demian, and Ignacio Presno.** 2012. "Sovereign Default Risk and Uncertainty Premia." Federal Reserve Bank of Boston Working Paper 12–11.
- Rajan, Raghuram G.** 2010. *Fault Lines: How Hidden Fractures Still Threaten the World Economy*. Princeton, NJ: Princeton University Press.
- Reich, Robert B.** 2010. *AfterShock: The Next Economy and America's Future*. New York: Random House.
- Reiter, Michael.** 2004. "Do the Rich Save Too Much? How to Explain the Top Tail of the Wealth Distribution." Unpublished.
- Saez, Emmanuel, and Gabriel Zucman.** 2014. "The Distribution of US Wealth: Capital Income and Returns since 1913." Unpublished.
- Schularick, Moritz, and Alan M. Taylor.** 2012. "Credit Booms Gone Bust: Monetary Policy, Leverage Cycles, and Financial Crises, 1870–2008." *American Economic Review* 102 (2): 1029–61.
- United States Bureau of Labor Statistics.** 1929. "Cost of Living: Cost of Living of Federal Employees in Five Cities." *Monthly Labor Review* 29 (4): 241–56.
- Wheelock, David C.** 2008. "The Federal Response to Home Mortgage Distress: Lessons from the Great Depression." *Federal Reserve Bank of St Louis Review* 90 (3): 133–48.



**This article has been cited by:**

1. Nicolas Jabko, Nils Kupzok. 2024. Indirect responsiveness and green central banking. *Journal of European Public Policy* 31:4, 1026-1050. [[Crossref](#)]
2. Graeme Cokayne, Eddie Gerba, Andreas Kuchler, Rasmus Pank Roulund. 2024. "Thank me later": Why is (macro)prudence desirable?. *Journal of Financial Stability* 71, 101227. [[Crossref](#)]
3. Boris Cota, Nataša Erjavec, Saša Jakšić. 2024. Income inequality, economic openness and current account imbalances in new EU member states. *Empirica* 46. . [[Crossref](#)]
4. Manh Hung Pham, Hoang Diep Huong Truong, Dung Phuong Hoang. 2024. Economic Complexity, Shadow Economy, and Income Inequality: Fresh Evidence from Panel Data. *International Economic Journal* 6, 1-23. [[Crossref](#)]
5. Jingtao Wang. 2024. Will wealth inequality decrease happiness?—Empirical evidence from China. *Frontiers in Psychology* 14. . [[Crossref](#)]
6. ANNA SAMARINA, ANH D.M. NGUYEN. 2024. Does Monetary Policy Affect Income Inequality in the Euro Area?. *Journal of Money, Credit and Banking* 56:1, 35-80. [[Crossref](#)]
7. Jlenia Di Noia. 2024. When firms buy corporate bonds: an agent-based approach to credit within firms. *Journal of Economic Interaction and Coordination* 50. . [[Crossref](#)]
8. Tae-Sub Yun, Hee-Sun Bae, Il-Chul Moon, Deokjong Jeong. 2024. The relationship between housing finance and inequality. *Journal of Economic Interaction and Coordination* 19:1, 151-191. [[Crossref](#)]
9. Shengquan Wang, Yuan Gao, Mingjin Luo. 2023. What drives income inequality? Bayesian evidence from the emerging market economies. *Journal of Applied Economics* 26:1. . [[Crossref](#)]
10. Keunbae Ahn, Gerhard Hambusch, Kihoon Hong, Marco Navone. 2023. Investing in a leveraged world. *International Journal of Managerial Finance* 69. . [[Crossref](#)]
11. Margaret Rutendo Magwedere. 2023. Credit - inequality nexus: the role of natural resources. *Economics and Environment* 86:3, 508-526. [[Crossref](#)]
12. Isabel Cairó, Jae Sim. 2023. Monetary policy and financial stability. *Journal of Economic Dynamics and Control* 157, 104764. [[Crossref](#)]
13. Shengquan Wang. 2023. Income inequality and systemic banking crises: A nonlinear nexus. *Economic Systems* 47:4, 101123. [[Crossref](#)]
14. Luca Eduardo Fierro, Federico Giri, Alberto Russo. 2023. Inequality-constrained monetary policy in a financialized economy. *Journal of Economic Behavior & Organization* 216, 366-385. [[Crossref](#)]
15. Burcu Hacibedel, Pierre Mandon, Priscilla Muthoora, Nathalie Pouokam. 2023. Inequality, growth fluctuations, and employment. *Empirical Economics* 110. . [[Crossref](#)]
16. Tomas Domonkos, Boris Fisera, Maria Siranova. 2023. Income inequality as long-term conditioning factor of monetary transmission to bank rates. *Economic Modelling* 128, 106492. [[Crossref](#)]
17. Carola Frydman, Chenzi Xu. 2023. Banking Crises in Historical Perspective. *Annual Review of Financial Economics* 15:1, 265-290. [[Crossref](#)]
18. Jaejoon Woo. 2023. Financial crises and inequality: New evidence from a panel of 17 advanced economies. *The Journal of Economic Asymmetries* 28, e00323. [[Crossref](#)]
19. Jean-Baptiste Michau. 2023. Helicopter Drops of Money under Secular Stagnation: From Ponzi to Pigou. *Journal of Political Economy Macroeconomics* 20. . [[Crossref](#)]
20. PASCAL PAUL. 2023. Historical Patterns of Inequality and Productivity around Financial Crises. *Journal of Money, Credit and Banking* 55:7, 1641-1665. [[Crossref](#)]

21. Runjie Geng, Felix Kubler. 2023. Stochastic overlapping generations with non-convex budget sets. *Journal of Mathematical Economics* **107**, 102866. [[Crossref](#)]
22. Thomas Aronsson, Sugata Ghosh, Ronald Wendner. 2023. Positional preferences and efficiency in a dynamic economy. *Social Choice and Welfare* **61**:2, 311-337. [[Crossref](#)]
23. Etienne Lepers. 2023. Surfing the credit wave: Government popularity as driver of credit cycles. *European Journal of Political Economy* **57**, 102456. [[Crossref](#)]
24. Xiao Chang, Nian Liu, Chun Kwok Lei, Qingbin Zhao, Xinhua Gu. 2023. Current Account Imbalances, Income Inequality, and Financial Instability: Asian Experiences. *Emerging Markets Finance and Trade* **59**:9, 2802-2814. [[Crossref](#)]
25. Edmond Berisha, David Gabauer, Rangan Gupta, Jacobus Nel. 2023. Time-varying predictability of financial stress on inequality in United Kingdom. *Journal of Economic Studies* **50**:5, 987-1007. [[Crossref](#)]
26. Jean-Baptiste Michau, Yoshiyasu Ono, Matthias Schlegl. 2023. Wealth preference and rational bubbles. *European Economic Review* **156**, 104496. [[Crossref](#)]
27. Kun Zhai, Guoqing Zhao, Ding Li. 2023. Macprudential policy and household wealth inequality: Evidence from China. *Journal of Asian Economics* **86**, 101608. [[Crossref](#)]
28. Dong-Hyeon Kim, Shu-Chin Lin. 2023. Income inequality, inflation and financial development. *Journal of Empirical Finance* **72**, 468-487. [[Crossref](#)]
29. Xinhua Gu, Chun Kwok Lei, Qingbin Zhao, Nian Liu. 2023. Different experiences of Asian emerging-market economies in the two major financial crises. *International Journal of Finance & Economics* **49**. . [[Crossref](#)]
30. Ulrich Eydam, Hannes Qualo. 2023. Income inequality and taxes – an empirical assessment. *Applied Economics Letters* **84**, 1-8. [[Crossref](#)]
31. Pintu Parui. 2023. Worker household debt, functional income distribution and growth: A neo-Kaleckian perspective. *Metroeconomica* **74**:2, 446-476. [[Crossref](#)]
32. Ahmad Borazan. 2023. Setting the record straight on the recovery from the 1920–1921 recession. *Cambridge Journal of Economics* **47**:2, 289-308. [[Crossref](#)]
33. Ken-ichi Hashimoto, Yoshiyasu Ono, Matthias Schlegl. 2023. Structural unemployment, underemployment, and secular stagnation. *Journal of Economic Theory* **209**, 105641. [[Crossref](#)]
34. Andreas Wiedemann. 2023. A Social Policy Theory of Everyday Borrowing: On the Role of Welfare States and Credit Regimes. *American Journal of Political Science* **67**:2, 324-341. [[Crossref](#)]
35. Shengquan Wang, Rong Luo. 2023. Income distribution, financial liberalisations and banking stability: Theory and international evidence. *International Journal of Finance & Economics* **81**. . [[Crossref](#)]
36. Jérôme Creel, Paul Hubert, Fabien Labondance. 2023. Credit, banking fragility, and economic performance. *Oxford Economic Papers* **75**:2, 553-573. [[Crossref](#)]
37. Ying'ai Piao, Meiru Li, Hongyuan Sun, Ying Yang. 2023. Income Inequality, Household Debt, and Consumption Growth in the United States. *Sustainability* **15**:5, 3910. [[Crossref](#)]
38. Michael Brei, Giovanni Ferri, Leonardo Gambacorta. 2023. Financial structure and income inequality. *Journal of International Money and Finance* **131**, 102807. [[Crossref](#)]
39. GUILLAUME BAZOT. 2023. Deregulation and Financial Intermediation Cost: An International Comparison. *Journal of Money, Credit and Banking* **120**. . [[Crossref](#)]
40. Rym Ayadi, Sami B. Naceur, Sandra Challita. 2023. Does income inequality really matter for credit booms?. *Economic Notes* **52**:1. . [[Crossref](#)]

41. Xinyun Yin, Rui Wang, Menglu Zhao. 2023. How household debt impacts residents' health: evidence from China. *Applied Economics Letters* 1-4. [[Crossref](#)]
42. Sungmin Park, Young-Han Kim. 2023. The impact of macroprudential policy on inequality and implications for inclusive financial stability. *Journal of Banking & Finance* **146**, 106716. [[Crossref](#)]
43. Ali Ari, Raif Cergibozan. Income Inequality, Household Debt, and Financial Crises 105-124. [[Crossref](#)]
44. Pranab Bardhan. Inequality and Inefficiency 897-903. [[Crossref](#)]
45. Huub Brouwer, Alexander Andersson. Justice at Work 147-158. [[Crossref](#)]
46. Nam Gang Lee, Seungho Nah. 2023. The Credit-Driven Business Cycles in South Korea: How Important is the Credit Supply Channel?. *SSRN Electronic Journal* **101**. . [[Crossref](#)]
47. Jean-Baptiste Michau, Yoshiyasu Ono, Matthias Schlegl. 2023. The Preference for Wealth and Inequality: Towards a Piketty Theory of Wealth Inequality. *SSRN Electronic Journal* **29**. . [[Crossref](#)]
48. Nabil El Maghrebi, Abbas Mirakhor, Tarık Akın, Zamir Iqbal. Rethinking the Essence of Macroeconomic Policies in the İqtisād Paradigm 285-326. [[Crossref](#)]
49. Jean-Baptiste Michau, Yoshiyasu Ono, Matthias Schlegl. 2023. The Preference for Wealth and Inequality: Towards a Piketty Theory of Wealth Inequality. *SSRN Electronic Journal* **29**. . [[Crossref](#)]
50. Soohyon Kim, Seolwoong Hwang. 2023. Household Debt and Income Inequality in South Korea. *SSRN Electronic Journal* **71**. . [[Crossref](#)]
51. Elin Molin, Paula Roth. 2023. Does Income Inequality Lead to Increased Household Debt? An Instrumental Variable Approach. *SSRN Electronic Journal* **99**. . [[Crossref](#)]
52. Shuanglian Chen, Junhao Zhong, Pierre Failler. 2022. Does China transmit financial cycle spillover effects to the G7 countries?. *Economic Research-Ekonomska Istraživanja* **35**:1, 5184-5201. [[Crossref](#)]
53. Aylin ABUK DUYGULU, Mehmet ÖZYİĞİT. 2022. Financial Inclusion and Income Inequality: An Evaluation on Cause-and- Effect Relationship. *Bulletin of Economic Theory and Analysis* **7**:2, 297-325. [[Crossref](#)]
54. Melissa Haller, Jeffrey B. Wenger, Melanie A. Zaber, George W. Zuo. 2022. A Consumption-Based Definition of the Middle Class. *Social Indicators Research* **164**:3, 1249-1270. [[Crossref](#)]
55. Francis Mensah, Guoqing Shi, Qingnian Yu, Emmanuel Bosompem Boadi, Francis Akorful Andam, Nicholas Anarfi Bofah. 2022. The Impact of Resettlement in Urban Market Redevelopment on Income Inequality, Its Determinants, and Implications for the Resettled Population: Applying the Kejetia New Market Exemplar, Ghana. *Sustainability* **14**:24, 16682. [[Crossref](#)]
56. Ján Boháčik. 2022. Financial shocks and their effects on velocity of money in agent-based model. *Review of Economic Perspectives* **22**:4, 241-266. [[Crossref](#)]
57. JEAN-NOËL BARROT, ERIK LOUALICHE, MATTHEW PLOSSER, JULIEN SAUVAGNAT. 2022. Import Competition and Household Debt. *The Journal of Finance* **77**:6, 3037-3091. [[Crossref](#)]
58. Xiao Chang, Jingya Li, Zongyuan Li. 2022. Revisit the Nexus between Saving and Inequality in Labor Intensive Economies: Evidence from China. *Emerging Markets Finance and Trade* **58**:14, 4091-4102. [[Crossref](#)]
59. Yener Altunbaş, John Thornton. 2022. Does inflation targeting increase income inequality?. *Journal of Post Keynesian Economics* **45**:4, 558-580. [[Crossref](#)]
60. Gertjan Vlieghe. 2022. Demographics and other constraints on future monetary policy. *The Journal of the Economics of Ageing* **23**, 100424. [[Crossref](#)]
61. Bibiana Medialdea García, Antonio Sanabria Martín. 2022. Income inequality and household debt as a factor of financial fragility in the Spanish economy. *Socio-Economic Review* **20**:3, 1425-1447. [[Crossref](#)]

62. Jan Behringer, Till van Treeck. 2022. Varieties of capitalism and growth regimes: the role of income distribution. *Socio-Economic Review* **20**:3, 1249-1286. [[Crossref](#)]
63. Hai-Anh H. Dang, Edmund Malesky, Cuong Viet Nguyen. 2022. Inequality and support for government responses to COVID-19. *PLOS ONE* **17**:9, e0272972. [[Crossref](#)]
64. Lejla Terzić. 2022. Unveiling the Linkages between Economic Complexity, Innovation and Growth: The Case of High-Income and Upper Middle-Income Economies. *Scientific Annals of Economics and Business* **69**:3, 477-500. [[Crossref](#)]
65. Guangdong Xu. 2022. Is Rajan's Hypothesis Confirmed by Empirical Evidence? A Critical Review. *Review of Radical Political Economics* **54**:3, 334-350. [[Crossref](#)]
66. Filip Chybalski. 2022. Intergenerational income distribution before and after the great recession: winners and losers. *DECISION* **49**:3, 311-327. [[Crossref](#)]
67. Lindokuhle Talent Zungu, Lorraine Greyling. 2022. Exploring the Dynamic Shock of Unconventional Monetary Policy Channels on Income Inequality: A Panel VAR Approach. *Social Sciences* **11**:8, 369. [[Crossref](#)]
68. Hyounjong Kim, Dong-Eun Rhee. 2022. The effects of asset prices on income inequality: Redistribution policy does matter. *Economic Modelling* **113**, 105899. [[Crossref](#)]
69. Bill Kolios. 2022. The Relationship between Credit, Elections, and Party Ideology in Australia. *Journal of Economic Issues* **56**:3, 869-882. [[Crossref](#)]
70. Carles Manera, Ferran Navines, Jose Pérez-Montiel, Javier Franconetti. 2022. Capital productivity and the decreasing wage share in the United States: a Keynesian Approach. *Journal of Post Keynesian Economics* **45**:3, 429-453. [[Crossref](#)]
71. Li Sheng, Zhaoyong Zhang. 2022. Revisiting global imbalances: A comparative analysis of income and consumption inequality. *Economics & Politics* **34**:2, 382-390. [[Crossref](#)]
72. Milan Zafirovski. 2022. Consequences of income concentration for democratic processes in contemporary Western and comparable societies: Evidence for OECD countries, 2017-2019. *International Sociology* **37**:4, 515-541. [[Crossref](#)]
73. Emilio Carnevali, Francesco Ruggeri, Marco Veronese Passarella. 2022. Inequality and Exchange Rate Movements in an Open-Economy Macroeconomic Model. *Review of Political Economy* **80**, 1-39. [[Crossref](#)]
74. Silvia Magri, Valentina Michelangeli, Sabrina Pastorelli, Raffaella Pico. 2022. The Expansion of Consumer Credit in Italy and the Main Euro Area Countries. *European Review* **30**:3, 322-352. [[Crossref](#)]
75. Insook Lee. 2022. Conditional effect of government debt on household debt. *Applied Economics* **54**:24, 2759-2777. [[Crossref](#)]
76. Yung-Ching Tseng, I-Fan Hsiao. 2022. Decomposing the factors influencing household debt: the case of China. *Applied Economics* **54**:23, 2627-2642. [[Crossref](#)]
77. Panagiotis Konstantinou, Anastasios Rizos, Artemis Stratopoulou. 2022. Macroprudential policies and income inequality in former transition economies. *Economic Change and Restructuring* **55**:2, 1005-1062. [[Crossref](#)]
78. Filomena Garcia, Ettore Panetti. 2022. Wealth inequality, systemic financial fragility and government intervention. *Economic Theory* **108**. . [[Crossref](#)]
79. Christian Pierdzioch, Rangan Gupta, Hossein Hassani, Emmanuel Sirimal Silva. 2022. Forecasting changes of economic inequality: A boosting approach. *The Social Science Journal* **59**:2, 252-268. [[Crossref](#)]

80. Andreas Wiedemann. 2022. How Credit Markets Substitute for Welfare States and Influence Social Policy Preferences: Evidence from US States. *British Journal of Political Science* 52:2, 829-849. [[Crossref](#)]
81. Mariya Hake, Philipp Poyntner. 2022. Keeping Up With the Novaks? Income Distribution as a Determinant of Household Debt in CESEE. *Review of Income and Wealth* 68:S1. . [[Crossref](#)]
82. Nina Boyarchenko, Giovanni Favara, Moritz Schularick. 2022. Financial Stability Considerations for Monetary Policy: Empirical Evidence and Challenges. *Finance and Economics Discussion Series* 2022:005, 1-33. [[Crossref](#)]
83. Mikael Randrup Byrjalsen, Hamid Raza. 2022. Household debt and macroeconomic stability: An empirical stock-flow consistent model for the Danish economy. *Metroeconomica* 73:1, 144-197. [[Crossref](#)]
84. Fabio Ascione, Matthias Schnetzer. 2022. Out of balance? Revisiting the nexus of income inequality, household debt and current account imbalances after the Great Recession. *Cambridge Journal of Economics* 46:1, 133-165. [[Crossref](#)]
85. Amos Witztum. Desperation by Consent: Inequality and Financial Crises 159-176. [[Crossref](#)]
86. Pranab Bardhan. Inequality and Inefficiency 1-8. [[Crossref](#)]
87. Sophie Nicole Cave, Megan Wright, Sophie von Stumm. 2022. Change and stability in the association of parents' education with children's intelligence. *Intelligence* 90, 101597. [[Crossref](#)]
88. Sylvain Catherine, Max Miller, James Paron, Natasha Sarin. 2022. Who hedges interest-rate risk? Implications for wealth inequality. *SSRN Electronic Journal* 109. . [[Crossref](#)]
89. Joana David Avritzer, Lidia Brochier. 2022. Credit-Financed Household Consumption and the Debt Service Ratio: Tackling Endogenous Autonomous Demand in the Supermultiplier Model. *SSRN Electronic Journal* 39. . [[Crossref](#)]
90. Amir Sufi, Alan M. Taylor. Financial crises: a survey 291-340. [[Crossref](#)]
91. Stefano Sgambati. 2022. Who owes? Class struggle, inequality and the political economy of leverage in the twenty-first century. *Finance and Society* 8:1, 1-21. [[Crossref](#)]
92. Ricardo J Caballero, Emmanuel Farhi, Pierre-Olivier Gourinchas. 2021. Global Imbalances and Policy Wars at the Zero Lower Bound. *The Review of Economic Studies* 88:6, 2570-2621. [[Crossref](#)]
93. Cristina Bodea, Christian Houle, Hyunwoo Kim. 2021. Do financial crises increase income inequality?. *World Development* 147, 105635. [[Crossref](#)]
94. Faris Alshubiri. 2021. Financial deepening indicators and income inequality of OECD and ASIAN countries. *The Journal of Economic Asymmetries* 24, e00211. [[Crossref](#)]
95. Francesco Strati. 2021. Representative bubbles and deleveraging. *Review of Behavioral Finance* 13:5, 502-521. [[Crossref](#)]
96. Atif Mian, Ludwig Straub, Amir Sufi. 2021. Indebted Demand. *The Quarterly Journal of Economics* 136:4, 2243-2307. [[Crossref](#)]
97. INSOOK LEE. 2021. CO-MOVEMENT OF STEADY-STATE GOVERNMENT DEBT AND HOUSEHOLD DEBT. *The Singapore Economic Review* 14, 1-35. [[Crossref](#)]
98. Cary Deck, Li Hao, Weineng Xu, Timothy J. Yeager. 2021. Social Comparison and Wealth Inequality in a Leveraged Asset Market. *Journal of Behavioral Finance* 22:4, 382-402. [[Crossref](#)]
99. Abebe Hailemariam, Tutsirai Sakutukwa, Ratbek Dzhumashev. 2021. Long-term determinants of income inequality: evidence from panel data over 1870–2016. *Empirical Economics* 61:4, 1935-1958. [[Crossref](#)]

100. Jingjing Huo. 2021. Social democracy and the relative price of investment: left governments, indirect taxation and the division of corporate income in affluent democracies. *Socio-Economic Review* **19**:3, 953-974. [[Crossref](#)]
101. Ernest Gyapong, Daniel Gyimah, Ammad Ahmed. 2021. Religiosity, borrower gender and loan losses in microfinance institutions: a global evidence. *Review of Quantitative Finance and Accounting* **57**:2, 657-692. [[Crossref](#)]
102. Xinhua Gu, ChunKwok Lei, Li Sheng, Qingbin Zhao. 2021. Global current account imbalances and the link between income and consumption inequality. *Review of International Economics* **29**:3, 557-572. [[Crossref](#)]
103. Orkun ÇELİK. 2021. CAUSALITY LINKAGES BETWEEN INCOME INEQUALITY AND FINANCIAL GLOBALIZATION FOR G7 COUNTRIES. *Finansal Araştırmalar ve Çalışmalar Dergisi* **13**:25, 344-360. [[Crossref](#)]
104. Philip Arestis. 2021. UK and other advanced economies productivity and income inequality. *International Review of Applied Economics* **35**:3-4, 355-370. [[Crossref](#)]
105. Marwil J. Dávila Fernández, Lionello F. Punzo. 2021. Some new insights on financialization and income inequality: evidence for the US economy, 1947–2013. *International Review of Applied Economics* **35**:3-4, 520-539. [[Crossref](#)]
106. Mehmet Balcilar, Edmond Berisha, Rangan Gupta, Christian Pierdzioch. 2021. Time-varying evidence of predictability of financial stress in the United States over a century: The role of inequality. *Structural Change and Economic Dynamics* **57**, 87-92. [[Crossref](#)]
107. Qingbin Zhao, Chun Kwok Lei, Lei Peng, Xinhua Gu. 2021. The U.S.-Sino different links between income and consumption inequality. *Applied Economics Letters* **28**:9, 713-716. [[Crossref](#)]
108. Pascal Michailat, Emmanuel Saez. 2021. Resolving New Keynesian Anomalies with Wealth in the Utility Function. *The Review of Economics and Statistics* **103**:2, 197-215. [[Crossref](#)]
109. Fabio Braggion, Mintra Dwarkasing, Steven Ongena. 2021. Household Inequality, Entrepreneurial Dynamism, and Corporate Financing. *The Review of Financial Studies* **34**:5, 2448-2507. [[Crossref](#)]
110. Josef Schroth. 2021. On the distributional effects of bank bailouts. *Review of Economic Dynamics* **40**, 252-277. [[Crossref](#)]
111. Glauco De Vita, Yun Luo. 2021. Financialization, household debt and income inequality: Empirical evidence. *International Journal of Finance & Economics* **26**:2, 1917-1937. [[Crossref](#)]
112. Mostafa Shahee, Glenn P. Jenkins. 2021. Income inequality and the cost of recessions. *Acta Oeconomica* **71**:1, 85-97. [[Crossref](#)]
113. Qingbin Zhao, Guoqiang Li, Xinhua Gu, Chun Kwok Lei. 2021. Inequality hikes, saving surges, and housing bubbles. *International Review of Economics & Finance* **72**, 349-363. [[Crossref](#)]
114. Alberto Botta, Eugenio Caverzasi, Alberto Russo, Mauro Gallegati, Joseph E. Stiglitz. 2021. Inequality and finance in a rent economy. *Journal of Economic Behavior & Organization* **183**, 998-1029. [[Crossref](#)]
115. Marco Gallegati, Alan Kirman. 2021. Introduction to the special issue on “New macroeconomic perspectives on inequality, credit, and stability”. *Journal of Economic Behavior & Organization* **183**, 884-886. [[Crossref](#)]
116. Michael T. Kiley. 2021. What macroeconomic conditions lead financial crises?. *Journal of International Money and Finance* **111**, 102316. [[Crossref](#)]
117. Glen Biglaiser, Ronald McGavran. 2021. The effects of bond ratings on income inequality in the developing world. *Business and Politics* **23**:1, 36-66. [[Crossref](#)]
118. Rémi Bazillier, Jérôme Héricourt, Samuel Ligonnière. 2021. Structure of income inequality and household leverage: Cross-country causal evidence. *European Economic Review* **132**, 103629. [[Crossref](#)]



119. Xinhua Gu, Pui Sun Tam, Chun Kwok Lei. 2021. The effects of inequality in the 1997–98 Asian crisis and the 2008–09 global tsunami: The case of five Asian economies. *Journal of International Money and Finance* **110**, 102306. [[Crossref](#)]
120. Michael Aklin, Andreas Kern, Mario Negre. Does Central Bank Independence Increase Inequality? **14**, . [[Crossref](#)]
121. Huru Dragoş, Roman Mihai Daniel, Manafi Ioana, Paraschiv Anca Maria, Ştefan George. Macroeconomic Policies, Economic Revitalization 207-234. [[Crossref](#)]
122. Ansgar Rannenberg. 2021. State-dependent fiscal multipliers with preferences over safe assets. *Journal of Monetary Economics* **117**, 1023-1040. [[Crossref](#)]
123. Ying Xu. 2021. Unconventional Monetary Policy and Household Credit Inequality. *SSRN Electronic Journal* **115**. . [[Crossref](#)]
124. Amir Sufi, Alan M. Taylor. 2021. Financial Crises: A Survey. *SSRN Electronic Journal* **69**. . [[Crossref](#)]
125. Jorge Pozo Sánchez. 2021. The Impact of the Financial Crisis on Wealth and Income Inequality. *SSRN Electronic Journal* **36**. . [[Crossref](#)]
126. Jonathan Bridges, Georgina Green, Mark Joy. 2021. Credit, Crises and Inequality. *SSRN Electronic Journal* **109**. . [[Crossref](#)]
127. Sungmin Park. 2021. The Effects of Mortgage Loan-to-value Ratio Ceilings on House Prices. *SSRN Electronic Journal* **44**. . [[Crossref](#)]
128. Isabel Cairó, Jae Sim. 2020. Monetary Policy and Financial Stability. *Finance and Economics Discussion Series* **2020**:101, 1-36. [[Crossref](#)]
129. Olivier Coibion, Yuriy Gorodnichenko, Marianna Kudlyak, John Mondragon. 2020. Greater Inequality and Household Borrowing: New Evidence from Household Data. *Journal of the European Economic Association* **18**:6, 2922-2971. [[Crossref](#)]
130. Angela M. O’Rand, Jenifer Hamil-Luker. 2020. Landfall After the Perfect Storm: Cohort Differences in the Relationship Between Debt and Risk of Heart Attack. *Demography* **57**:6, 2199-2220. [[Crossref](#)]
131. Lan Khanh Chu, Dung Phuong Hoang. 2020. How does economic complexity influence income inequality? New evidence from international data. *Economic Analysis and Policy* **68**, 44-57. [[Crossref](#)]
132. Berrak Bahadır, Kuhelika De, William D. Lastrapes. 2020. Household debt, consumption and inequality. *Journal of International Money and Finance* **109**, 102240. [[Crossref](#)]
133. Mehdi El Herradi, Aurélien Leroy. 2020. Do rising top incomes fuel credit expansion?. *Economics Letters* **196**, 109539. [[Crossref](#)]
134. Yuliyen Mitkov. 2020. Inequality and financial fragility. *Journal of Monetary Economics* **115**, 233-248. [[Crossref](#)]
135. Lea Steininger, Michael Sigmund. 2020. Reciprocity in bank regulatory reforms and income inequality: first evidence from a panel vector autoregression analysis. *Empirical Economics* **59**:4, 1537-1572. [[Crossref](#)]
136. Dominik Menno, Tommaso Oliviero. 2020. Financial intermediation, house prices, and the welfare effects of the U.S. Great Recession. *European Economic Review* **129**, 103568. [[Crossref](#)]
137. Lixin Tang. 2020. Entrepreneur income inequality, aggregate saving and the gains from trade. *Review of Economic Dynamics* **38**, 273-295. [[Crossref](#)]
138. Yanbing Han, Min Xiong, Howard A. Frank. 2020. Public Administration and Macroeconomic Issues: Is This the Time for a Marriage Proposal?. *Administration & Society* **52**:9, 1439-1462. [[Crossref](#)]
139. Hassan F. Gholipour, Reza Tajaddini, Thi Ngoc Tram Pham. 2020. Real estate market transparency and default on mortgages. *Research in International Business and Finance* **53**, 101202. [[Crossref](#)]



140. Thomas Hauner. 2020. Aggregate wealth and its distribution as determinants of financial crises. *The Journal of Economic Inequality* 18:3, 319-338. [[Crossref](#)]
141. Makram El-Shagi, Jarko Fidrmuc, Steven Yamarik. 2020. Inequality and credit growth in Russian regions. *Economic Modelling* 91, 550-558. [[Crossref](#)]
142. Karl-Friedrich Israel, Sophia Latsos. 2020. The impact of (un)conventional expansionary monetary policy on income inequality – lessons from Japan. *Applied Economics* 52:40, 4403-4420. [[Crossref](#)]
143. Xiao Chang, Guoqiang Li, Xinhua Gu, Chunyu Lei. 2020. Does the inequality-credit-crisis nexus exist? An empirical re-examination. *Applied Economics* 52:37, 4044-4057. [[Crossref](#)]
144. Christopher L Foote, Lara Loewenstein, Paul S Willen. 2020. Cross-Sectional Patterns of Mortgage Debt during the Housing Boom: Evidence and Implications. *The Review of Economic Studies* 29. . [[Crossref](#)]
145. Hiroshi Nishi, Engelbert Stockhammer. 2020. Distribution shocks in a Kaleckian model with hysteresis and monetary policy. *Economic Modelling* 90, 465-479. [[Crossref](#)]
146. Isabel Cairó, Jae Sim. 2020. Market Power, Inequality, and Financial Instability. *Finance and Economics Discussion Series* 2020:057. . [[Crossref](#)]
147. ANNAMARIA LUSARDI, OLIVIA S. MITCHELL, NOEMI OGGERO. 2020. Debt and Financial Vulnerability on the Verge of Retirement. *Journal of Money, Credit and Banking* 52:5, 1005-1034. [[Crossref](#)]
148. Martin Geiger, Eric Mayer, Johann Scharler. 2020. Inequality and the business cycle: evidence from U.S. survey data. *Applied Economics* 52:31, 3418-3435. [[Crossref](#)]
149. Steve Keen. 2020. Emergent Macroeconomics: Deriving Minsky's Financial Instability Hypothesis Directly from Macroeconomic Definitions. *Review of Political Economy* 32:3, 342-370. [[Crossref](#)]
150. Edmond Berisha, John Meszaros. 2020. Macroeconomic determinants of wealth inequality dynamics. *Economic Modelling* 89, 153-165. [[Crossref](#)]
151. Alina K. Bartscher, Moritz Kuhn, Moritz Schularick, Ulrike I. Steins. 2020. Modigliani Meets Minsky: Inequality, Debt, and Financial Fragility in America, 1950-2016. *Institute for New Economic Thinking Working Paper Series* 1-77. [[Crossref](#)]
152. Chia-Chien Chang. 2020. Economic Inequality, War Finance and the Pursuit of Tax Fairness. *Journal of Human Values* 26:2, 114-132. [[Crossref](#)]
153. Yulin Liu, Min Zhang, Rujia Liu. 2020. The Impact of Income Inequality on Carbon Emissions in China: A Household-Level Analysis. *Sustainability* 12:7, 2715. [[Crossref](#)]
154. Miao Miao, Yan Zhang, Shilin Zheng. 2020. Within-Firm Wage Inequality and Corporate Innovation: Evidence from China's Listed Firms. *Emerging Markets Finance and Trade* 56:4, 796-819. [[Crossref](#)]
155. Alessia De Stefani. 2020. Debt, inequality and house prices: Explaining the dynamics of household borrowing prior to the great recession. *Journal of Housing Economics* 47, 101601. [[Crossref](#)]
156. Philipp Heimberger. 2020. The dynamic effects of fiscal consolidation episodes on income inequality: evidence for 17 OECD countries over 1978-2013. *Empirica* 47:1, 53-81. [[Crossref](#)]
157. Rui Guo, Wei Sun, Jianqiu Wang, Gang Xiao. 2020. Why do retired workers claim their social security benefits so early? A potential explanation based on the cumulative prospect theory. *Applied Economics* 52:5, 490-505. [[Crossref](#)]
158. Jeremy Rayner, Susan Falls, George Souvlis, Taylor C. Nelms. Introduction: Back to the 30s? 1-34. [[Crossref](#)]
159. Sumit Agarwal, Wenlan Qian, Ruth Tan. Introduction 1-28. [[Crossref](#)]
160. Sumit Agarwal, Wenlan Qian, Ruth Tan. Borrowing 247-278. [[Crossref](#)]

161. Diego Avanzini, Juan Francisco Martínez, Víctor Pérez. 2020. Assessing mortgage default risk in full-recourse economies, with an application to the case of Chile. *Latin American Journal of Central Banking* 1:1-4, 100009. [[Crossref](#)]
162. Alessandro Caiani, Alberto Russo, Mauro Gallegati. 2020. ARE HIGHER WAGES GOOD FOR BUSINESS? AN ASSESSMENT UNDER ALTERNATIVE INNOVATION AND INVESTMENT SCENARIOS. *Macroeconomic Dynamics* 24:1, 191-230. [[Crossref](#)]
163. Sumit Agarwal, Vyacheslav Mikhed, Barry Scholnick. 2020. Peers' Income and Financial Distress: Evidence from Lottery Winners and Neighboring Bankruptcies. *The Review of Financial Studies* 33:1, 433-472. [[Crossref](#)]
164. Enrico Perotti, Oscar Soons. 2020. The Political Economy of a Diverse Monetary Union. *SSRN Electronic Journal* . [[Crossref](#)]
165. Guillermo Peña. 2020. VAT experience as an influence on banking crises. *National Accounting Review* 2:1, 53-65. [[Crossref](#)]
166. Ken-Ichi Hashimoto, Yoshiyasu Ono, Matthias Schlegl. 2020. Structural Unemployment, Underemployment, and Secular Stagnation. *SSRN Electronic Journal* 86. . [[Crossref](#)]
167. Ken-Ichi Hashimoto, Yoshiyasu Ono, Matthias Schlegl. 2020. Structural Unemployment, Underemployment, and Secular Stagnation. *SSRN Electronic Journal* 86. . [[Crossref](#)]
168. Paula Roth. 2020. Inequality, Relative Deprivation and Financial Distress - Evidence from Swedish Register Data. *SSRN Electronic Journal* 80. . [[Crossref](#)]
169. Sonali Jain-Chandra, Tidiane Kinda, Kalpana Kochhar, Shi Piao, Johanna Schauer. 2019. Sharing the Growth Dividend: Analysis of Inequality in Asia. *Journal of Banking and Financial Economics* 2:2019, 5-28. [[Crossref](#)]
170. Giorgio Bellettini, Flavio Delbono, Peter Karlström, Sergio Pastorello. 2019. Income inequality and banking crises: Testing the level hypothesis directly. *Journal of Macroeconomics* 62, 103054. [[Crossref](#)]
171. Mehmet Akif Destek, Bilge Koksel. 2019. Income inequality and financial crises: evidence from the bootstrap rolling window. *Financial Innovation* 5:1. . [[Crossref](#)]
172. Gunes Gokmen, Annaig Morin. 2019. Inequality in the aftermath of financial crises: some empirical evidence. *Applied Economics Letters* 26:19, 1558-1562. [[Crossref](#)]
173. Paola D'Orazio. 2019. Income inequality, consumer debt, and prudential regulation: An agent-based approach to study the emergence of crises and financial instability. *Economic Modelling* 82, 308-331. [[Crossref](#)]
174. Lise Clain-Chamosset-Yvard. 2019. EXPECTATION-DRIVEN ASSET PRICE FLUCTUATIONS UNDER THE SPIRIT OF CAPITALISM HYPOTHESIS: THE ROLE OF HETEROGENEITY. *Macroeconomic Dynamics* 71, 1-27. [[Crossref](#)]
175. Sungmun Choi. 2019. Is the Current Trend of Income Inequality Sustainable?. *Sustainability* 11:19, 5329. [[Crossref](#)]
176. Andrea Colciago, Anna Samarina, Jakob de Haan. 2019. CENTRAL BANK POLICIES AND INCOME AND WEALTH INEQUALITY: A SURVEY. *Journal of Economic Surveys* 33:4, 1199-1231. [[Crossref](#)]
177. Xinhua Gu, Pui Sun Tam, Yang Zhang, Chun Kwok Lei. 2019. Inequality, leverage and crises: Theory and evidence revisited. *The World Economy* 42:8, 2280-2299. [[Crossref](#)]
178. MARIA ELISA FARIAS, JAVIER SCAVIA, RAÚL FUENTES. 2019. Bridging the Gaps: Credits, Adoption, and Inequality. *Journal of Money, Credit and Banking* 51:5, 1355-1401. [[Crossref](#)]
179. Ashrafee Tánvir Hossain, Lawrence Kryzanowski. 2019. Global financial crisis after ten years: a review of the causes and regulatory reactions. *Managerial Finance* 45:7, 904-924. [[Crossref](#)]

180. Georgios Papadopoulos. 2019. Income inequality, consumption, credit and credit risk in a data-driven agent-based model. *Journal of Economic Dynamics and Control* **104**, 39-73. [[Crossref](#)]
181. Yuliya Demyanyk, Dmytro Hryshko, María José Luengo-Prado, Bent E. Sørensen. 2019. The Rise and Fall of Consumption in the 2000s: A Tangled Tale. *Economica* **86**:343, 495-531. [[Crossref](#)]
182. Wenzhi Zheng, Yuting Lou, Yu Chen. 2019. On the Unsustainable Macroeconomy with Increasing Inequality of Firms Induced by Excessive Liquidity. *Sustainability* **11**:11, 3075. [[Crossref](#)]
183. Eugenio Caverzasi, Alberto Botta, Clara Capelli. 2019. Shadow banking and the financial side of financialisation. *Cambridge Journal of Economics* **12**. . [[Crossref](#)]
184. Hyunjoon Lim. 2019. The response of household debt to income inequality shocks: a heterogeneous approach. *Applied Economics Letters* **26**:8, 684-689. [[Crossref](#)]
185. Joseph Tzur, Arie Jacobi. 2019. Wealth inequality and bank failure: A cross-country simulation analysis. *Journal of International Financial Markets, Institutions and Money* **60**, 193-210. [[Crossref](#)]
186. Nicola Matteucci. 2019. La crisi ed il declino italiani. Dibattito ed evidenze recenti. *PRISMA Economia - Società - Lavoro* :1, 77-96. [[Crossref](#)]
187. Alberto Cardaci, Francesco Saraceno. 2019. BETWEEN SCYLLA AND CHARYBDIS: INCOME DISTRIBUTION, CONSUMER CREDIT, AND BUSINESS CYCLES. *Economic Inquiry* **57**:2, 953-971. [[Crossref](#)]
188. Alessandro Caiani, Alberto Russo, Mauro Gallegati. 2019. Does inequality hamper innovation and growth? An AB-SFC analysis. *Journal of Evolutionary Economics* **29**:1, 177-228. [[Crossref](#)]
189. Andrew G. Haldane, Arthur E. Turrell. 2019. Drawing on different disciplines: macroeconomic agent-based models. *Journal of Evolutionary Economics* **29**:1, 39-66. [[Crossref](#)]
190. Giovanni Dosi, Andrea Roventini. 2019. More is different ... and complex! the case for agent-based macroeconomics. *Journal of Evolutionary Economics* **29**:1, 1-37. [[Crossref](#)]
191. Mathias Klein, Roland Winkler. 2019. Austerity, inequality, and private debt overhang. *European Journal of Political Economy* **57**, 89-106. [[Crossref](#)]
192. Gabriele Ciminelli, Ekkehard Ernst, Rossana Merola, Massimo Giuliodori. 2019. The composition effects of tax-based consolidation on income inequality. *European Journal of Political Economy* **57**, 107-124. [[Crossref](#)]
193. Ronald Fischer, Diego Huerta, Patricio Valenzuela. 2019. The inequality-credit nexus. *Journal of International Money and Finance* **91**, 105-125. [[Crossref](#)]
194. Ekkehard Ernst. 2019. Finance and Jobs: How Financial Markets and Prudential Regulation Shape Unemployment Dynamics. *Journal of Risk and Financial Management* **12**:1, 20. [[Crossref](#)]
195. Yun K. Kim, Gilberto Tadeu Lima, Mark Setterfield. 2019. Political aspects of household finance: debt, wage bargaining, and macroeconomic (in)stability. *Journal of Post Keynesian Economics* **42**:1, 16-38. [[Crossref](#)]
196. Cecilia García-Peñalosa. 2019. Inequality in Macroeconomic Models. *Revue de l'OFCE* N° **157**:3, 93-115. [[Crossref](#)]
197. Francesco Saraceno. 2019. The End of the Consensus? The Economic Crisis and the Crisis of Macroeconomics. *Revue de l'OFCE* N° **157**:3, 319-334. [[Crossref](#)]
198. Siti Muawanah Lajis. Fintech and Risk-Sharing: A Catalyst for Islamic Finance 237-254. [[Crossref](#)]
199. Giovanni Dosi, Andrea Roventini. 2019. More Is Different ... and Complex!: The Case for Agent-Based Macroeconomics. *SSRN Electronic Journal* **60**. . [[Crossref](#)]
200. Anna SamarIna, Anh D. M. Nguyen. 2019. Does Monetary Policy Affect Income Inequality in the Euro Area?. *SSRN Electronic Journal* . [[Crossref](#)]

201. Lea Steininger, Michael Sigmund. 2019. Reciprocity in Bank Regulatory Reforms and Income Inequality – First Evidence from a Panel Vector Autoregression Analysis. *SSRN Electronic Journal* . [\[Crossref\]](#)
202. Mehdi El Herradi, Aurélien Leroy. 2019. Monetary Policy and the Top One Percent: Evidence from a Century of Modern Economic History. *SSRN Electronic Journal* **113**. . [\[Crossref\]](#)
203. Gianluca Benigno, Andrew T. Foerster, Christopher Otrok, Alessandro Rebucci. 2019. Estimating Macroeconomic Models of Financial Crises: An Endogenous Regime Switching Approach. *SSRN Electronic Journal* **54**. . [\[Crossref\]](#)
204. Unay Tamgac Tezcan. Popular Culture and Peer Effects in Consumption 11-35. [\[Crossref\]](#)
205. Oscar Bajo-Rubio, Ho-Don Yan. Globalization and Populism 229-252. [\[Crossref\]](#)
206. Clement Bellet. 2019. The McMansion Effect: Top Size Inequality, House Satisfaction and Home Improvement in U.S. Suburbs. *SSRN Electronic Journal* **56**. . [\[Crossref\]](#)
207. Haris Khan, Choudhry Tanveer Shehzad. 2019. Corporate Financing, Corporate Wealth Concentration, and Income Inequality. *SSRN Electronic Journal* **2**. . [\[Crossref\]](#)
208. Chrysovalantis Amountzias. 2019. An investigation of the effects of income inequality on financial fragility: Evidence from Organization for Economic Co-operation and Development countries. *International Journal of Finance & Economics* **24**:1, 241-259. [\[Crossref\]](#)
209. Linyang Li. 2018. Financial inclusion and poverty: The role of relative income. *China Economic Review* **52**, 165-191. [\[Crossref\]](#)
210. Eugenio Caverzasi, Alberto Russo. 2018. Toward a new microfounded macroeconomics in the wake of the crisis. *Industrial and Corporate Change* **27**:6, 999-1014. [\[Crossref\]](#)
211. Bilin Neyapti. 2018. Income distribution and economic crises. *International Finance* **21**:3, 273-296. [\[Crossref\]](#)
212. David Klenert, Gregor Schwerhoff, Ottmar Edenhofer, Linus Mattauch. 2018. Environmental Taxation, Inequality and Engel's Law: The Double Dividend of Redistribution. *Environmental and Resource Economics* **71**:3, 605-624. [\[Crossref\]](#)
213. Jochen Hartwig. 2018. Wachstumsfolgen von Einkommensungleichheit – Theorie, empirische Evidenz und Politikempfehlungen. *List Forum für Wirtschafts- und Finanzpolitik* **44**:2, 101-141. [\[Crossref\]](#)
214. Ekkehard Ernst, Faten Saliba. 2018. Are House Prices Responsible for Unemployment Persistence?. *Open Economies Review* **29**:4, 795-833. [\[Crossref\]](#)
215. Gerhard Illing, Yoshiyasu Ono, Matthias Schlegl. 2018. Credit booms, debt overhang and secular stagnation. *European Economic Review* **108**, 78-104. [\[Crossref\]](#)
216. Jan Behringer, Till van Treeck. 2018. Income distribution and the current account. *Journal of International Economics* **114**, 238-254. [\[Crossref\]](#)
217. François Bourguignon. 2018. World Changes in Inequality: an Overview of Facts, Causes, Consequences, and Policies1. *CESifo Economic Studies* **64**:3, 345-370. [\[Crossref\]](#)
218. Atif Mian, Amir Sufi. 2018. Finance and Business Cycles: The Credit-Driven Household Demand Channel. *Journal of Economic Perspectives* **32**:3, 31-58. [\[Abstract\]](#) [\[View PDF article\]](#) [\[PDF with links\]](#)
219. Jean-Baptiste Michau. 2018. Secular stagnation: Theory and remedies. *Journal of Economic Theory* **176**, 552-618. [\[Crossref\]](#)
220. Dong-Eun Rhee, Hyoungjong Kim. 2018. Does income inequality lead to banking crises in developing countries? Empirical evidence from cross-country panel data. *Economic Systems* **42**:2, 206-218. [\[Crossref\]](#)

221. Michael T. Kiley. 2018. What Macroeconomic Conditions Lead Financial Crises?. *Finance and Economics Discussion Series* **2018:038**. . [[Crossref](#)]
222. Lixin Sun. 2018. Quantifying the Effects of Financialization and Leverage in China. *The Chinese Economy* **51:3**, 209-226. [[Crossref](#)]
223. Alberto Cardaci. 2018. Inequality, household debt and financial instability: An agent-based perspective. *Journal of Economic Behavior & Organization* **149**, 434-458. [[Crossref](#)]
224. Hyejin Jung, Inseok Seo, Kyujin Jung. 2018. Mediating Role of Entrepreneurship in Explaining the Association Between Income Inequality and Regional Economic Performance. *Economic Development Quarterly* **32:2**, 135-145. [[Crossref](#)]
225. D. B. Krupp, Thomas R. Cook. 2018. Local Competition Amplifies the Corrosive Effects of Inequality. *Psychological Science* **29:5**, 824-833. [[Crossref](#)]
226. Pasquale Tridico, Riccardo Pariboni. 2018. Inequality, financialization, and economic decline. *Journal of Post Keynesian Economics* **41:2**, 236-259. [[Crossref](#)]
227. Edmond Berisha, John Meszaros. 2018. Household Debt, Consumption, and Income Inequality. *International Economic Journal* **32:2**, 161-176. [[Crossref](#)]
228. François Gourio, Anil K. Kashyap, Jae W. Sim. 2018. The Trade offs in Leaning Against the Wind. *IMF Economic Review* **66:1**, 70-115. [[Crossref](#)]
229. Rémi Bazillier, Jérôme Héricourt, Samuel Ligonnière. 2018. La relation circulaire entre inégalités de revenu et finance : tour d'horizon de la littérature et résultats récents. *Revue d'économie financière* N° **128:4**, 127-152. [[Crossref](#)]
230. Kevin J. Lansing, Agnieszka Markiewicz. 2018. Top Incomes, Rising Inequality and Welfare. *The Economic Journal* **128:608**, 262-297. [[Crossref](#)]
231. Francesco Saraceno. 2018. La fin du consensus ? La crise économique et la crise de la macroéconomie. *Revue de l'OFCE* N° **153:4**, 365-380. [[Crossref](#)]
232. Cecilia García-Peñalosa. 2018. Les inégalités dans les modèles macroéconomiques. *Revue de l'OFCE* N° **153:4**, 105-131. [[Crossref](#)]
233. A G Haldane, A E Turrell. 2018. An interdisciplinary model for macroeconomics. *Oxford Review of Economic Policy* **34:1-2**, 219-251. [[Crossref](#)]
234. Philip Arestis. Importance of Tackling Income Inequality and Relevant Economic Policies 1-42. [[Crossref](#)]
235. Giacomo Corneo. 2018. Time-poor, working, super-rich. *European Economic Review* **101**, 1-19. [[Crossref](#)]
236. Matteo Coronese, Isabelle Salle. 2018. The 'Rajan Hypothesis': A Counter-Factual Experiment. *SSRN Electronic Journal* . [[Crossref](#)]
237. Atif R. Mian, Amir Sufi. 2018. Finance and Business Cycles: The Credit-Driven Household Demand Channel. *SSRN Electronic Journal* . [[Crossref](#)]
238. Lise Clain-Chamosset-Yvrard. 2018. Expectation-Driven Asset Price Fluctuations Under the Spirit of Capitalism Hypothesis: The Role of Heterogeneity. *SSRN Electronic Journal* . [[Crossref](#)]
239. Andrea Colciago, Anna Samarina, Jakob de Haan. 2018. Central Bank Policies and Income and Wealth Inequality: A Survey. *SSRN Electronic Journal* **89**. . [[Crossref](#)]
240. Matthias Schlegl. 2018. Secular Stagnation in an Economy with Land. *SSRN Electronic Journal* . [[Crossref](#)]
241. Jean-Baptiste Michau, Yoshiyasu Ono, Matthias Schlegl. 2018. Wealth Preference and Rational Bubbles. *SSRN Electronic Journal* . [[Crossref](#)]

242. Georgios Papadopoulos. 2018. Income Inequality, Consumption, Credit and Credit Risk in a Data-Driven Agent-Based Model. *SSRN Electronic Journal* . [[Crossref](#)]
243. Eve Colson-Sihra, Clement Bellet. 2018. The Conspicuous Consumption of the Poor: Forgoing Calories for Aspirational Goods. *SSRN Electronic Journal* **134**. . [[Crossref](#)]
244. Asha Gupta. 2017. Dealing with Inequities in India and China: A Comparative Study of Welfare Provisions. *Indian Journal of Public Administration* **63**:4, 649-671. [[Crossref](#)]
245. Elisa Palagi, Mauro Napoletano, Andrea Roventini, Jean-Luc Gaffard. 2017. Inequality, Redistributive Policies and Multiplier Dynamics in an Agent-based Model with Credit Rationing. *Italian Economic Journal* **3**:3, 367-387. [[Crossref](#)]
246. Alberto Russo. 2017. An Agent Based Macroeconomic Model with Social Classes and Endogenous Crises. *Italian Economic Journal* **3**:3, 285-306. [[Crossref](#)]
247. Xinhua Gu, Guoqiang Li, Xiao Chang, Haizhen Guo. 2017. Casino tourism, economic inequality, and housing bubbles. *Tourism Management* **62**, 253-263. [[Crossref](#)]
248. John S. Ahlquist, Ben W. Ansell. 2017. Taking Credit. *World Politics* **69**:4, 640-675. [[Crossref](#)]
249. John V. Duca. 2017. The Great Depression versus the Great Recession in the U.S.: How fiscal, monetary, and financial policies compare. *Journal of Economic Dynamics and Control* **81**, 50-64. [[Crossref](#)]
250. Alberto Russo. 2017. Introduction to the special issue on large economic crises. *Journal of Economic Dynamics and Control* **81**, 1-4. [[Crossref](#)]
251. Olivier Coibion, Yuriy Gorodnichenko, Lorenz Kueng, John Silvia. 2017. Innocent Bystanders? Monetary policy and inequality. *Journal of Monetary Economics* **88**, 70-89. [[Crossref](#)]
252. Xinhua Gu, Yang Zhang, Xiao Chang. 2017. The role of financial systems for cross-country differences in the link between income and consumption inequality. *Applied Economics* **49**:24, 2365-2378. [[Crossref](#)]
253. Karl-Friedrich Israel. 2017. In the long run we are all unemployed?. *The Quarterly Review of Economics and Finance* **64**, 67-81. [[Crossref](#)]
254. Rémi Bazillier, Jérôme Héricourt. 2017. THE CIRCULAR RELATIONSHIP BETWEEN INEQUALITY, LEVERAGE, AND FINANCIAL CRISES. *Journal of Economic Surveys* **31**:2, 463-496. [[Crossref](#)]
255. Apostolos Fasianos, Hamid Raza, Stephen Kinsella. 2017. Exploring the link between household debt and income inequality: an asymmetric approach. *Applied Economics Letters* **24**:6, 404-409. [[Crossref](#)]
256. Reza Tajaddini, Hassan F. Gholipour. 2017. National Culture and Default on Mortgages. *International Review of Finance* **17**:1, 107-133. [[Crossref](#)]
257. Thomas Goda, Alejandro Torres García. 2017. The Rising Tide of Absolute Global Income Inequality During 1850–2010: Is It Driven by Inequality Within or Between Countries?. *Social Indicators Research* **130**:3, 1051-1072. [[Crossref](#)]
258. Francisco Alvarez-Cuadrado, Irakli Japaridze. 2017. Trickle-down consumption, financial deregulation, inequality, and indebtedness. *Journal of Economic Behavior & Organization* **134**, 1-26. [[Crossref](#)]
259. Dimitris Christopoulos, Peter McAdam. 2017. Do financial reforms help stabilize inequality?. *Journal of International Money and Finance* **70**, 45-61. [[Crossref](#)]
260. Zamir Iqbal, Abbas Mirakhor. Sacralizing Finance: Risk-Sharing Islamic Finance 135-162. [[Crossref](#)]
261. Luca Riccetti, Alberto Russo, Mauro Gallegati. AD-AS Representation of Macroeconomic Emergent Properties 65-86. [[Crossref](#)]



262. Mathias Klein. 2017. Austerity, Inequality, and Private Debt Overhang. *SSRN Electronic Journal* . [[Crossref](#)]
263. Elisa Palagi, Mauro Napoletano. 2017. Inequality, Redistributive Policies and Multiplier Dynamics in an Agent-Based Model with Credit Rationing. *SSRN Electronic Journal* . [[Crossref](#)]
264. Ignacio Gonzzlez, Pedro Trivvn. 2017. The Global Rise of Asset Prices and the Decline of the Labor Share. *SSRN Electronic Journal* . [[Crossref](#)]
265. Pierre Monnin. 2017. Monetary Policy, Macroprudential Regulation and Inequality. *SSRN Electronic Journal* . [[Crossref](#)]
266. DB Krupp, Thomas R. Cook. 2017. Local Competition Amplifies the Corrosive Effects of Inequality. *SSRN Electronic Journal* . [[Crossref](#)]
267. Alessandro Caiani, Alberto Russo, Mauro Gallegati. 2017. Are Higher Wages Good for Business? An Assessment Under Alternative Innovation and Investment Scenarios. *SSRN Electronic Journal* . [[Crossref](#)]
268. Thomas Goda, Santiago Sanchez. 2017. Market and Disposable Top Income Shares Adjusted by National Accounts Data. *SSRN Electronic Journal* . [[Crossref](#)]
269. Yun K. Kim, Gilberto Tadeu Lima, Mark Setterfield. 2017. Political Aspects of Household Debt. *SSRN Electronic Journal* . [[Crossref](#)]
270. Annamaria Lusardi, Olivia S. Mitchell, Noemi Oggero. 2017. Debt and Financial Vulnerability on the Verge of Retirement. *SSRN Electronic Journal* . [[Crossref](#)]
271. Andrew Haldane, Arthur Turrell. 2017. An Interdisciplinary Model for Macroeconomics. *SSRN Electronic Journal* . [[Crossref](#)]
272. . Emerging Shifts in the Relationships Between Providers of Labour and Users of Labour 167-190. [[Crossref](#)]
273. Santiago Acosta Ormaechea, Takuji Komatsuzaki, Carolina Correa-Caro. 2017. Fiscal Reforms, Long-term Growth and Income Inequality. *IMF Working Papers* 17:145, 1. [[Crossref](#)]
274. Thomas Goda, Özlem Onaran, Engelbert Stockhammer. 2017. Income Inequality and Wealth Concentration in the Recent Crisis. *Development and Change* 48:1, 3-27. [[Crossref](#)]
275. Karolin Kirschenmann, Tuomas Malinen, Henri Nyberg. 2016. The risk of financial crises: Is there a role for income inequality?. *Journal of International Money and Finance* 68, 161-180. [[Crossref](#)]
276. Tuomas Malinen. 2016. Does income inequality contribute to credit cycles?. *The Journal of Economic Inequality* 14:3, 309-325. [[Crossref](#)]
277. Kim Abildgren. 2016. Household micro-data, regulation and financial stability: the case of Denmark in the 1950s. *Studies in Economics and Finance* 33:2, 320-335. [[Crossref](#)]
278. Waldyr Dutra Areosa, Marta B.M. Areosa. 2016. The inequality channel of monetary transmission. *Journal of Macroeconomics* 48, 214-230. [[Crossref](#)]
279. Xavier Ragot. 2016. Le retour de l'économie keynésienne. *Revue d'économie financière* n° 121:1, 173-186. [[Crossref](#)]
280. Konstantin M. Wacker. 2016. Assaf, Razin: Understanding global crises: an emerging paradigm. *Journal of Economics* 117:3, 285-287. [[Crossref](#)]
281. Zakaria Babutsidze, Maurizio Iacopetta. 2016. Innovation, growth and financial markets. *Journal of Evolutionary Economics* 26:1, 1-24. [[Crossref](#)]
282. Sebastian Devlin-Foltz, John Sabelhaus. 2016. Heterogeneity in Economic Shocks and Household Spending in the US. *Fiscal Studies* 37:1, 153-192. [[Crossref](#)]
283. Carl Chiarella, Willi Semmler, Chih-Ying Hsiao, Lebogang Mateane. Asset Accumulation and Portfolio Decisions with Time Varying Asset Returns and Labor Income 97-114. [[Crossref](#)]



284. Henri Sneessens. Growth and Welfare: Shifts in Labour Market Policies 139-172. [[Crossref](#)]
285. Richard Barwell. Objectives 293-327. [[Crossref](#)]
286. Mohammad Reza Farzanegan, Pooya Alaedini. Introduction 1-13. [[Crossref](#)]
287. Olivier Godechot. 2016. Financialization Is Marketization! A Study of the Respective Impacts of Various Dimensions of Financialization on the Increase in Global Inequality. *Sociological Science* **3**, 495-519. [[Crossref](#)]
288. Thomas Goda. 2016. Global trends in relative and absolute income inequality. *Ecos de Economía* **20**:42, 46-69. [[Crossref](#)]
289. Kyubin Yim, Gabjin Oh. 2016. Technological Innovation, Inequality, and Financial Instability. *SSRN Electronic Journal* . [[Crossref](#)]
290. Giorgio Fagiolo. 2016. Macroeconomic Policy in DSGE and Agent-Based Models Redux: New Developments and Challenges Ahead. *SSRN Electronic Journal* **92**. . [[Crossref](#)]
291. Alessandro Caiani, Alberto Russo, Mauro Gallegati. 2016. Does Inequality Hamper Innovation and Growth?. *SSRN Electronic Journal* . [[Crossref](#)]
292. Julien Bengui, Toan Phan. 2016. Inequality and Risky Asset Bubbles. *SSRN Electronic Journal* . [[Crossref](#)]
293. Francesco Strati. 2016. Representative Bubbles and Deleveraging. *SSRN Electronic Journal* . [[Crossref](#)]
294. Giuseppe Mastromatteo, Lorenzo Esposito. 2016. Minsky at Basel: A Global Cap to Build an Effective Postcrisis Banking Supervision Framework. *SSRN Electronic Journal* **3**. . [[Crossref](#)]
295. Aristotelis Boukouras. 2016. Capitalist Spirit and the Markets: Why Income Inequality Matters. *SSRN Electronic Journal* **29**. . [[Crossref](#)]
296. Gerhard Illing, Yoshiyasu Ono, Matthias Schlegl. 2016. Asset Prices and Leverage in a Model of Persistent Stagnation. *SSRN Electronic Journal* . [[Crossref](#)]
297. Sonali Jain-Chandra, Tidiane Kinda, Kalpana Kochhar, Shi Piao, Johanna Schauer. 2016. Sharing the Growth Dividend: Analysis of Inequality in Asia. *IMF Working Papers* **16**:48, 1. [[Crossref](#)]
298. Matthieu Charpe, Stefan Kühn. 2015. Demand and supply effects of bargaining power shocks. *Economic Modelling* **51**, 21-32. [[Crossref](#)]
299. Eric Keller, Nathan J. Kelly. 2015. Partisan Politics, Financial Deregulation, and the New Gilded Age. *Political Research Quarterly* **68**:3, 428-442. [[Crossref](#)]
300. Jonathan Zinman. 2015. Household Debt: Facts, Puzzles, Theories, and Policies. *Annual Review of Economics* **7**:1, 251-276. [[Crossref](#)]
301. Sebastian J. Devlin-Foltz, John Sabelhaus. 2015. Heterogeneity in Economic Shocks and Household Spending. *Finance and Economics Discussion Series* **2015**:049, 1-43. [[Crossref](#)]
302. Thomas Goda, Alejandro Torres. 2015. Class or Location? What Explains the Rising Tide of Absolute Global Income Inequality During 1850-2010?. *SSRN Electronic Journal* . [[Crossref](#)]
303. Jan Siegmeier, Linus Mattauch, Max Franks, David Klenert, Anselm Schultes, Ottmar Edenhofer. 2015. A Public Finance Perspective on Climate Policy: Six Interactions That May Enhance Welfare. *SSRN Electronic Journal* **95**. . [[Crossref](#)]
304. Sebastian J. Devlin-Foltz, John Sabelhaus. 2015. Heterogeneity in Economic Shocks and Household Spending. *SSRN Electronic Journal* . [[Crossref](#)]
305. Boris Cournede, Oliver Denk, Peter Hoeller. 2015. Finance and Inclusive Growth. *SSRN Electronic Journal* . [[Crossref](#)]
306. Oliver Denk, Boris Cournede. 2015. Finance and Income Inequality in OECD Countries. *SSRN Electronic Journal* . [[Crossref](#)]

307. Jingjing Huo. 2015. Electoral Systems and the Rise and Fall of the Mass Consumption Society. *SSRN Electronic Journal* **8**. . [[Crossref](#)]
308. Robert E. Krainer. 2015. The Consumer Financial Protection Bureau: A Five Year Retrospective. *SSRN Electronic Journal* . [[Crossref](#)]
309. Fabio Braggion, Mintra Dwarkasing, Steven Ongena. 2014. Household Inequality, Corporate Capital Structure and Entrepreneurial Dynamism. *SSRN Electronic Journal* . [[Crossref](#)]
310. Josef Sebastian Schroth. 2014. Constrained-Efficient Bailouts. *SSRN Electronic Journal* **34**. . [[Crossref](#)]
311. Kevin J. Lansing, Agnieszka Markiewicz. 2012. Top Incomes, Rising Inequality, and Welfare. *SSRN Electronic Journal* . [[Crossref](#)]